

AQUATRACK[®]

0.035" Hydrophilic Nitinol Guidewire

Instant response
through the turns

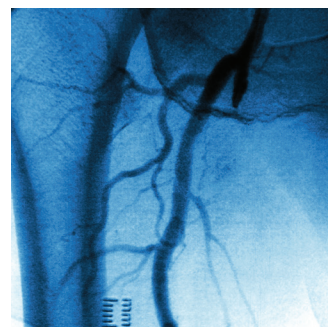
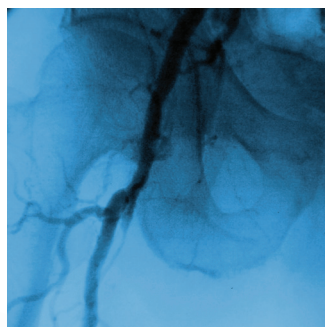
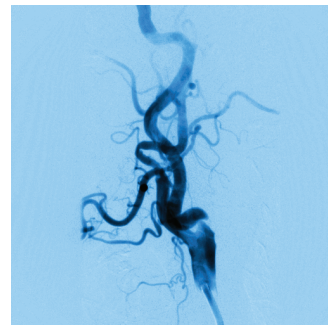
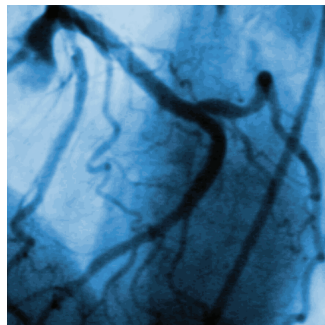


Easing access, however tortuous the anatomy

TRUE ONE-TO-ONE TORQUE RESPONSE

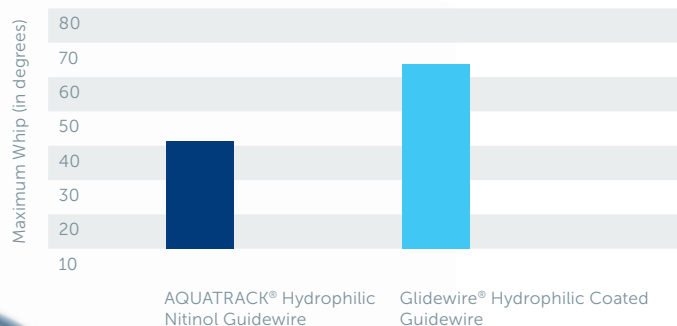
Compared with the Terumo Glidewire®,
AQUATRACK® Hydrophilic Nitinol Guidewire
provides¹:

- Precise control for vessel selection and lesion crossability
- Immediate response, with significantly less whip
- Minimal risk of kinking, perforation or dissection¹



TORQUABILITY¹

Maximum allowed = 60°



1. Cordis 2008 data on file

LASTING LUBRICITY

The AQUATRACK[®] Hydrophilic Nitinol Guidewire jacket and hydrophilic coating:

- Minimizes the push force required for wire advancement
- Allows for easier reinsertion after wiping during a procedure

The Photolink[®] hydrophilic coating process:

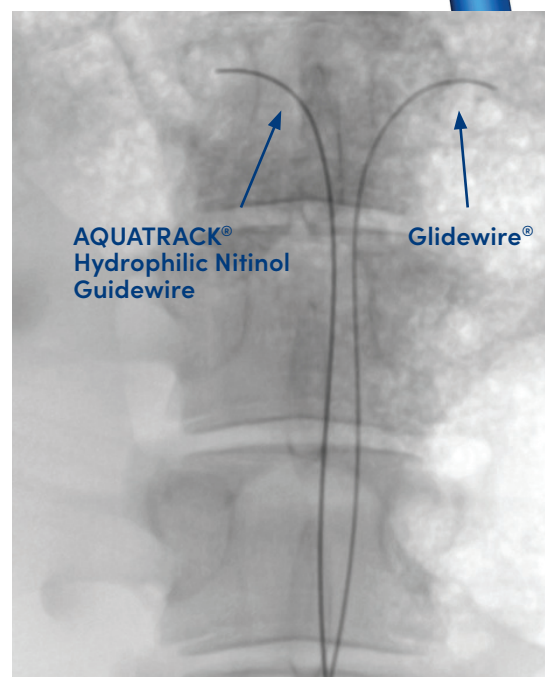
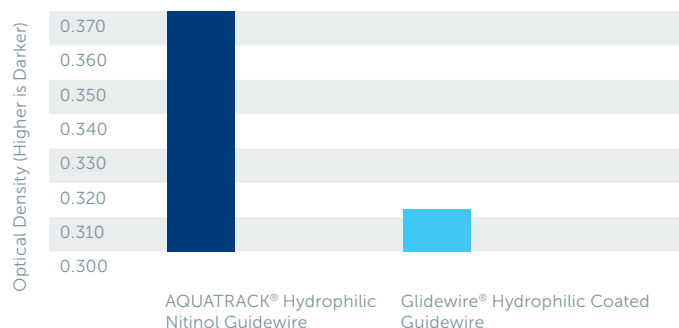
- Creates a strong bond between the lubricious coating and the wire surface
- Reduces the possibility of embolization from detached jacket debris by chemical bonding of the jacket to the wire

SUPERIOR RADIO-PACITY¹

Compared with the Terumo Glidewire[®], AQUATRACK[®] Hydrophilic Nitinol Guidewire:

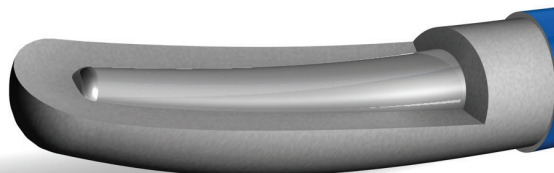
- Shows up significantly darker under fluoroscopy due to increased radiopaque material in the polymer jacket
- May allow faster and more accurate wire placement during procedures due to increased visibility

VISUALIZATION^{1,2}



Based on In vivo animal testing¹

Hydrophilic lubricity.
Bare wire torque.



1. Cordis 2008 data on file
2. The New Benchmark in Hydrophilic Wires?, *Endovascular Today*, 69 - 74, August 2008.

AQUATRACK®

0.035" Hydrophilic Nitinol Guidewire

ORDERING INFORMATION

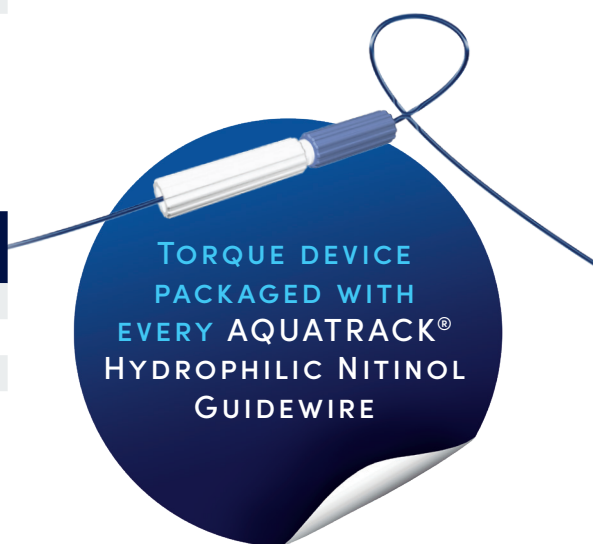
Regular wire tapers over 8"						
Size (in)	Length (cm)	Stiffness	Taper	Tip	Product Code	Quantity ³
.035	150	Regular	Short	Angled ⁴	C3515-RSA	5 Units/Box
.035	150	Regular	Short	Straight	C3515-RSS	5 Units/Box
.035	180	Regular	Short	Angled ⁴	C3518-RSA	5 Units/Box
.035	180	Regular	Short	Straight	C3518-RSS	5 Units/Box
.035	260	Regular	Short	Angled ⁴	C3526-RSA	5 Units/Box

3. Each catalog number must be ordered by the box

4. Angled = 60 degree Angle

Stiff wire tapers over 5"						
Size (in)	Length (cm)	Stiffness	Taper	Tip	Product Code	Quantity ³
.035	150	Stiff	Short	Angled ⁴	C3515-SSA	5 Units/Box
.035	180	Stiff	Short	Angled ⁴	C3518-SSA	5 Units/Box
.035	260	Stiff	Short	Angled ⁴	C3526-SSA	5 Units/Box
.035	260	Stiff	Short	Angled ⁴	C3526-SSS	5 Units/Box

4. Angled = 60 degree Angle



For optimal performance use, AQUATRACK® Hydrophilic Nitinol Guidewire in combination with TEMPO AQUA® Diagnostic Catheter

CAUTION: Federal (USA) law restricts this device to sale by or on the order of a physician.

Important information: Prior to use, refer to the instructions for use supplied with this device for indications, contraindications, side effects, suggested procedure, warnings and precautions.

CORDIS, Cordis LOGO, AQUATRACK, and TEMPO AQUA are trademarks of Cardinal Health and may be registered in the US and/or in other countries. All other marks are the property of their respective owners.

© 2021 Cardinal Health. All Rights Reserved. 100578488 07/2021

Cordis®
A Cardinal Health company