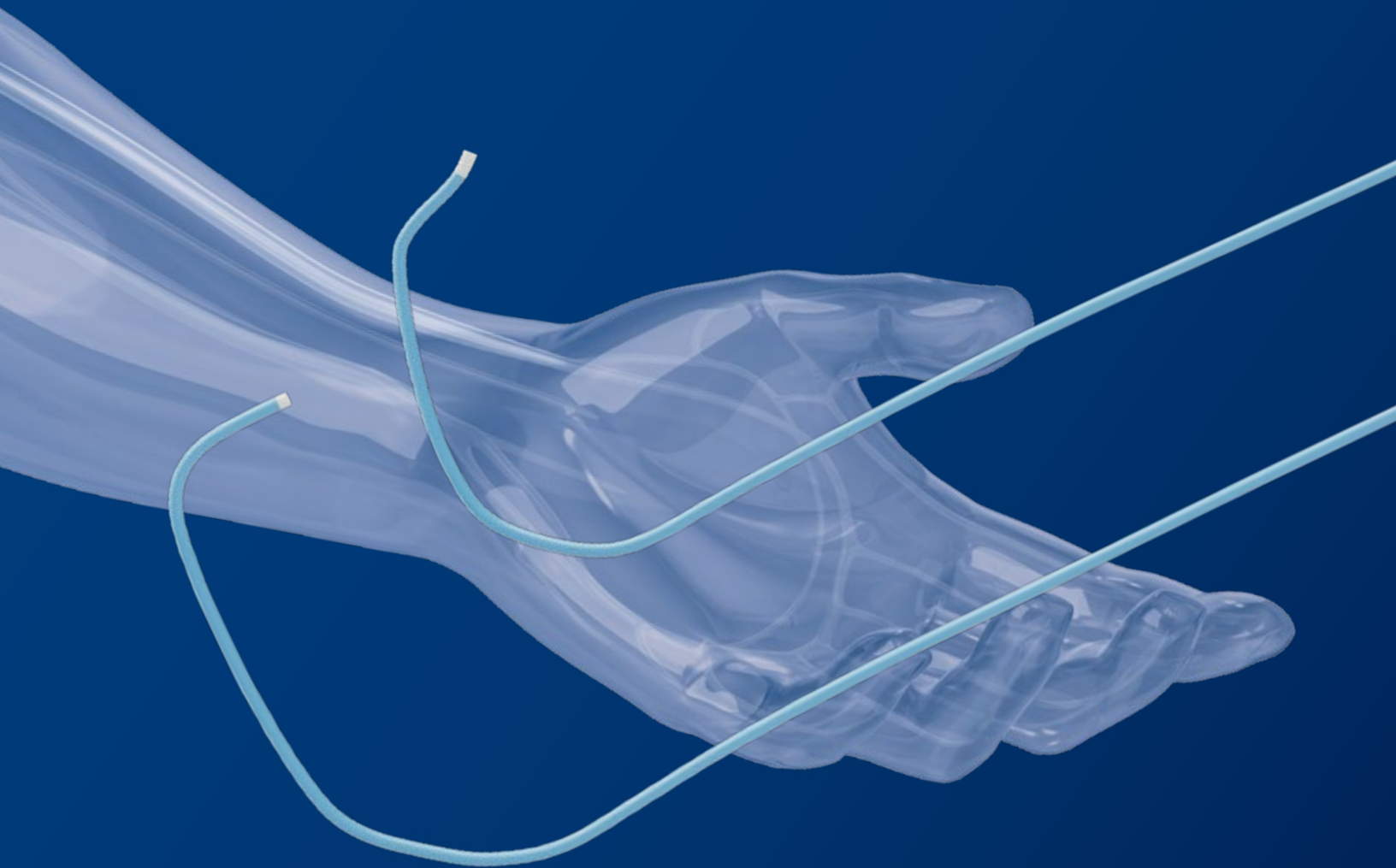


INFINITI[®] AMBI

DIAGNOSTIC CATHETER

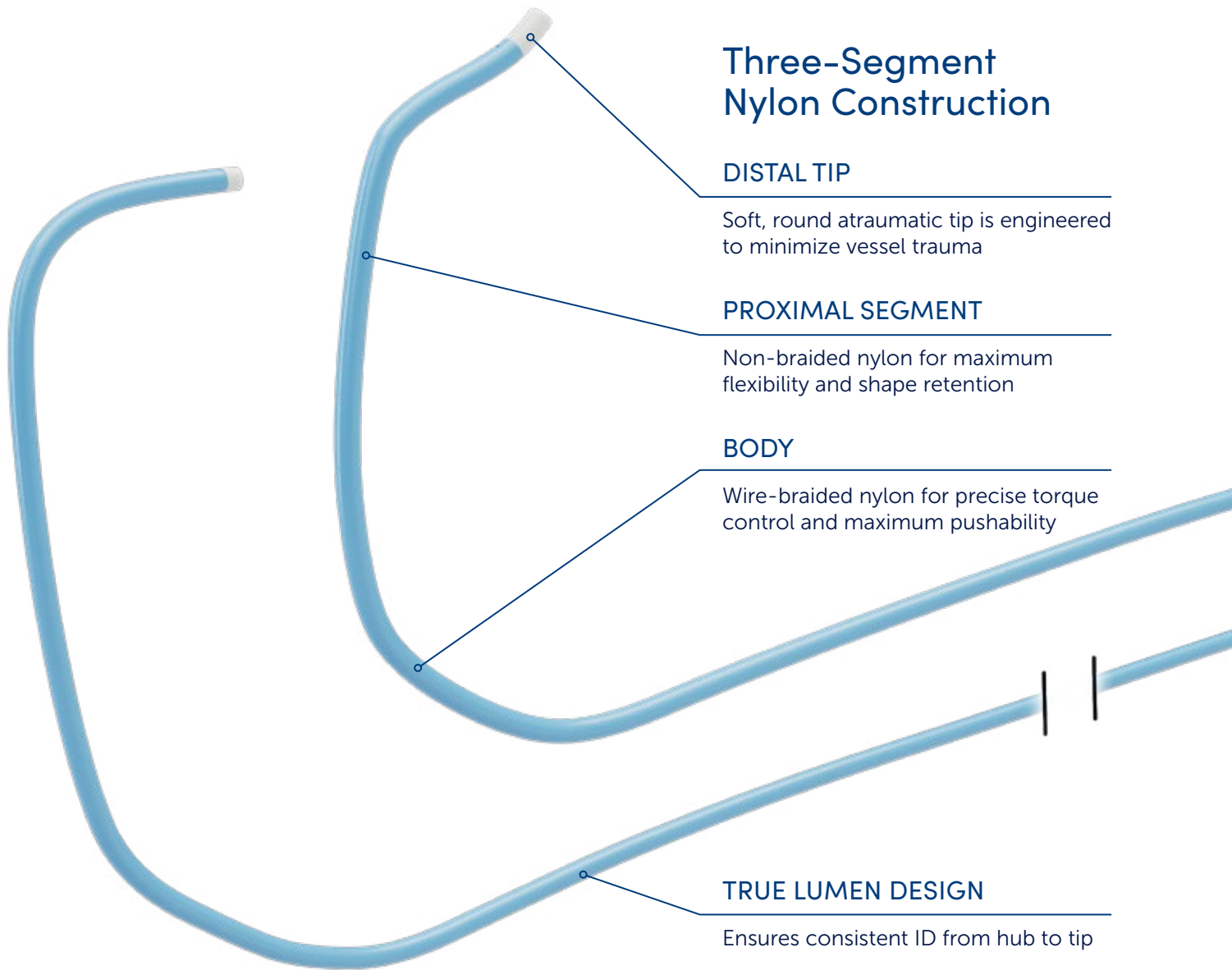


Radial-Specific Curves
Designed to Enable Support

Cordis[®]

Universal specific shapes

support a radial-first approach for percutaneous coronary intervention (PCI)



Three-Segment Nylon Construction

DISTAL TIP

Soft, round atraumatic tip is engineered to minimize vessel trauma

PROXIMAL SEGMENT

Non-braided nylon for maximum flexibility and shape retention

BODY

Wire-braided nylon for precise torque control and maximum pushability

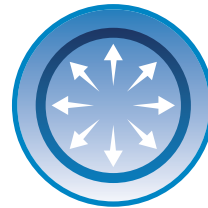
TRUE LUMEN DESIGN

Ensures consistent ID from hub to tip

Break lines on catheter images indicate lengths are longer than depicted

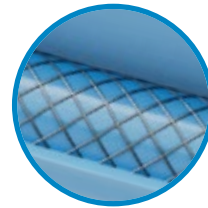
INFINITI[®] AMBI

DIAGNOSTIC CATHETER



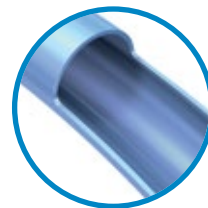
KINK RESISTANCE

Braided construction for excellent pushability



DIRECT RESPONSE

One-to-one torque control

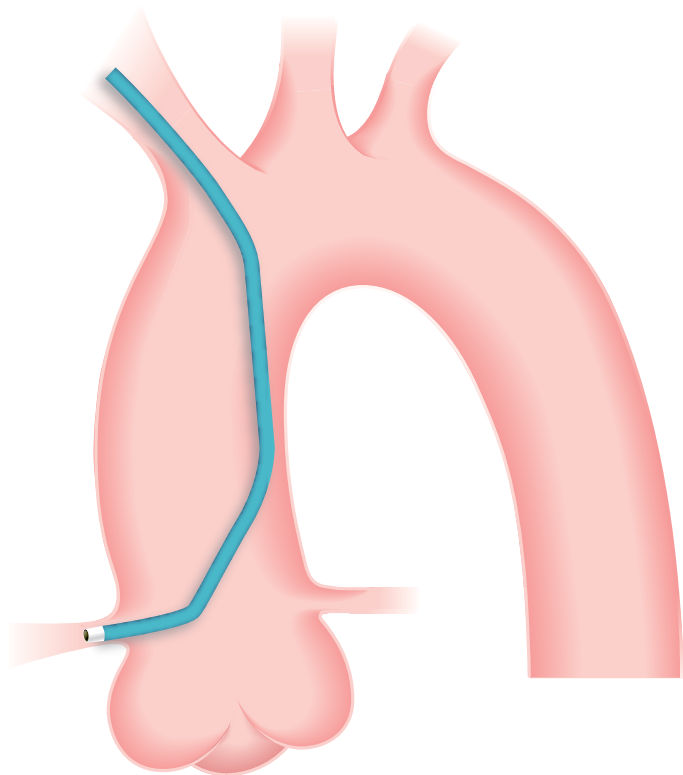


TRUE LUMEN DESIGN

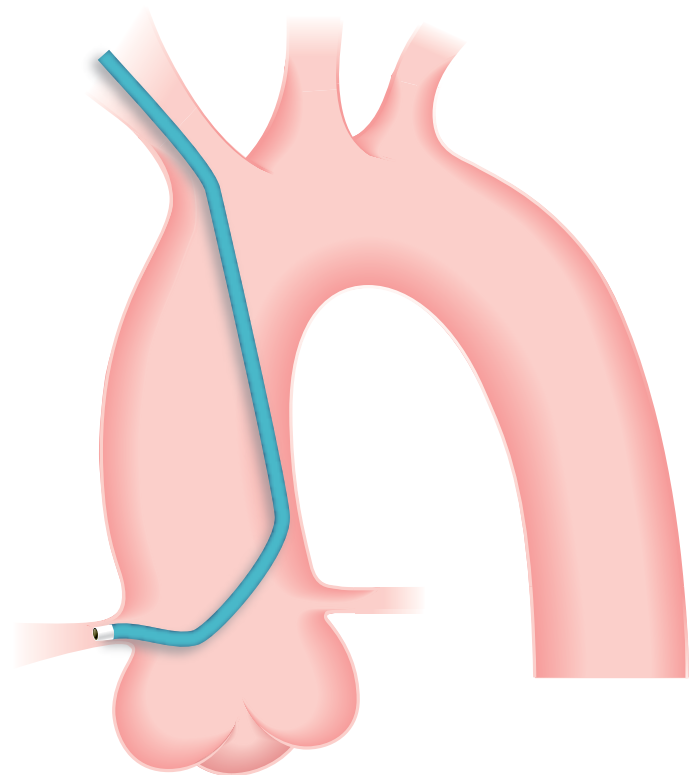
Facilitates easier injections

Catheter shape facilitates easy engagement

with coronary ostium to cannulate both right and left coronary arteries



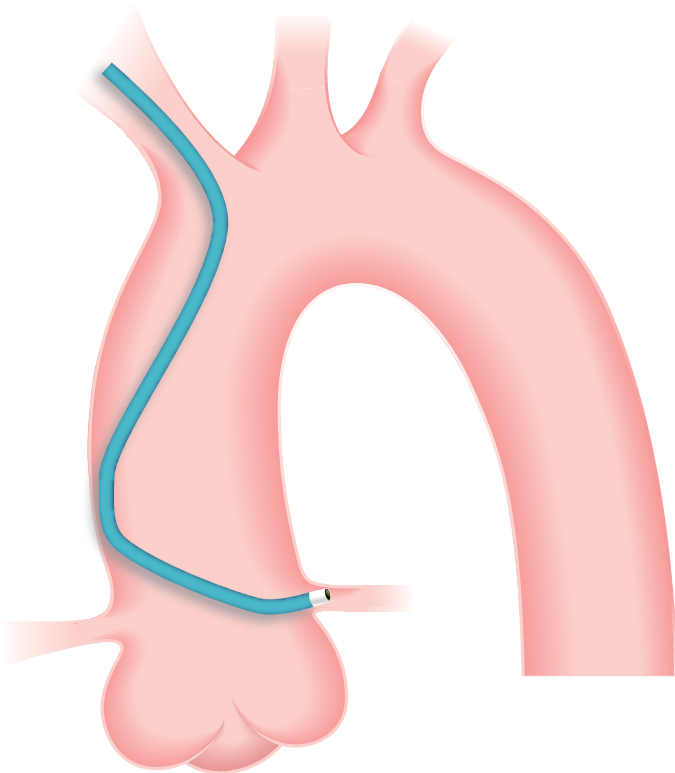
TG



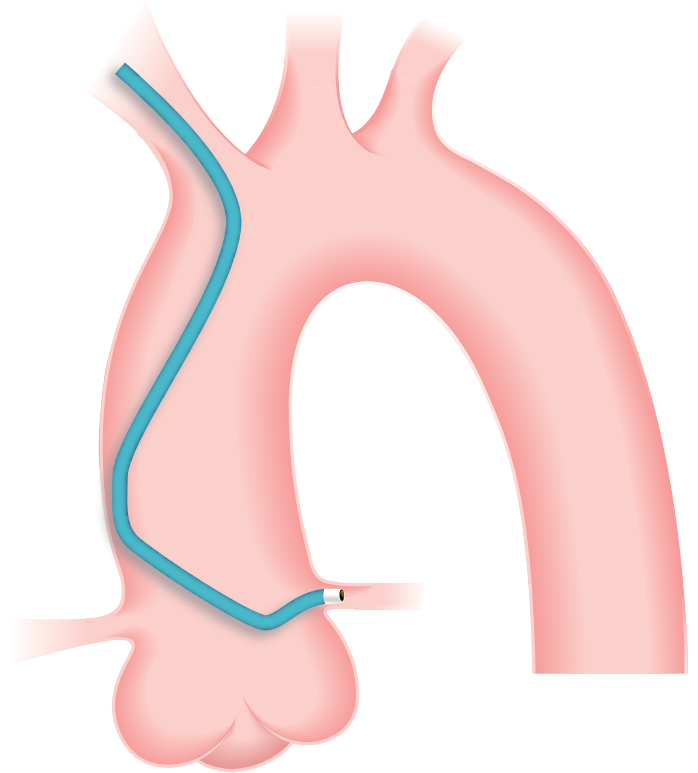
JK

INFINITI[®] AMBI

DIAGNOSTIC CATHETER



TG



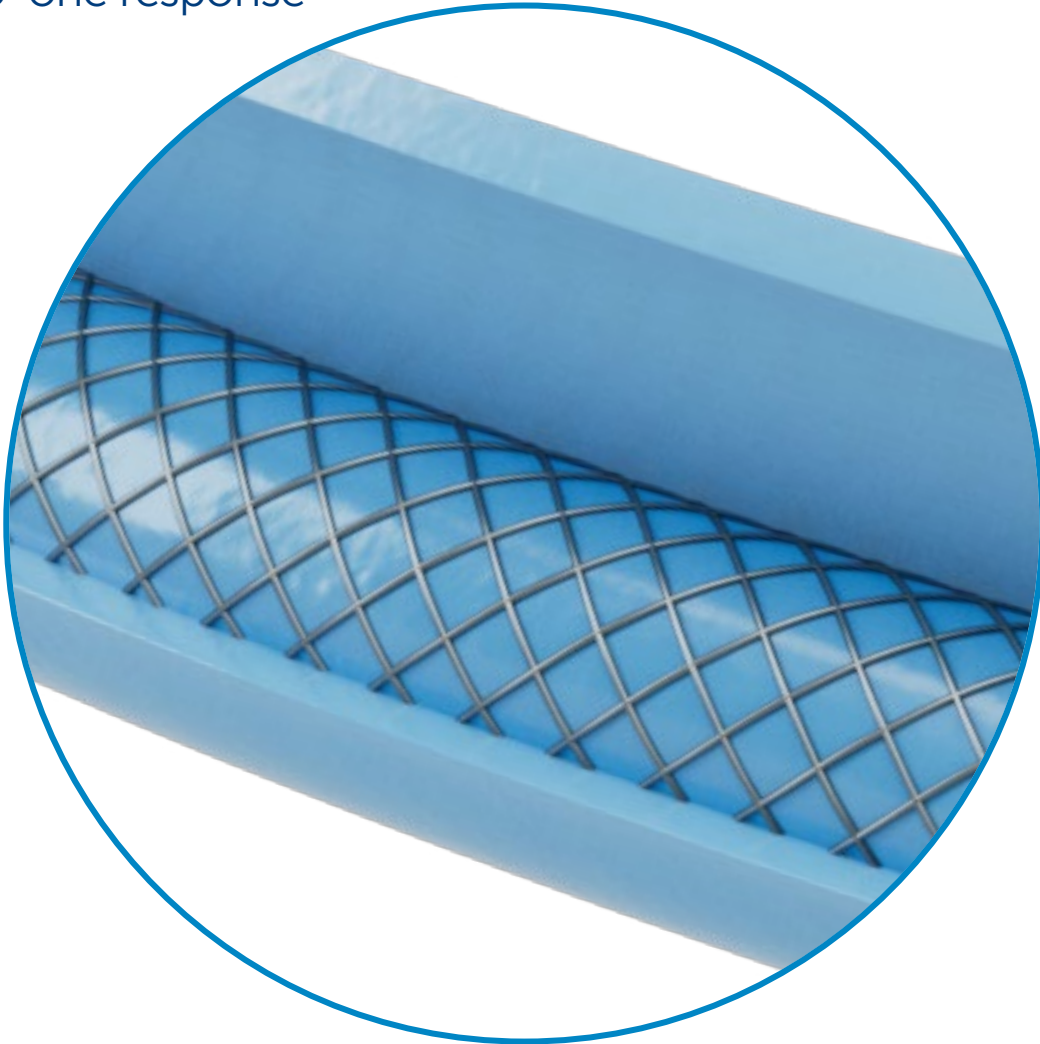
JK

Universal catheter design minimizes the need for catheter exchanges and potentially shortens:

- procedure time
- fluoroscopic time (radiation exposure)

Direct response

Enhanced torque with a one-to-one response

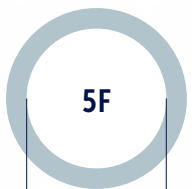


BRAIDED CONSTRUCTION
provides excellent pushability
without compromising kink
resistance

HIGH-DENSITY BRAIDING
for exceptional responsiveness
and one-to-one torque control

True Lumen Design

Thin wall technology and a consistent lumen diameter that facilitate easy injections and high flow rates



1.19 mm
0.047"
inner diameter



1.45 mm
0.057"
inner diameter

	5F	6F
Pressure Limit	1200 psi	1200 psi
Guidewire Acceptance	.038"	.038"
Flow Rate at Pressure Limit	ml/sec	ml/sec
100 cm	22	35
125 cm	19	32

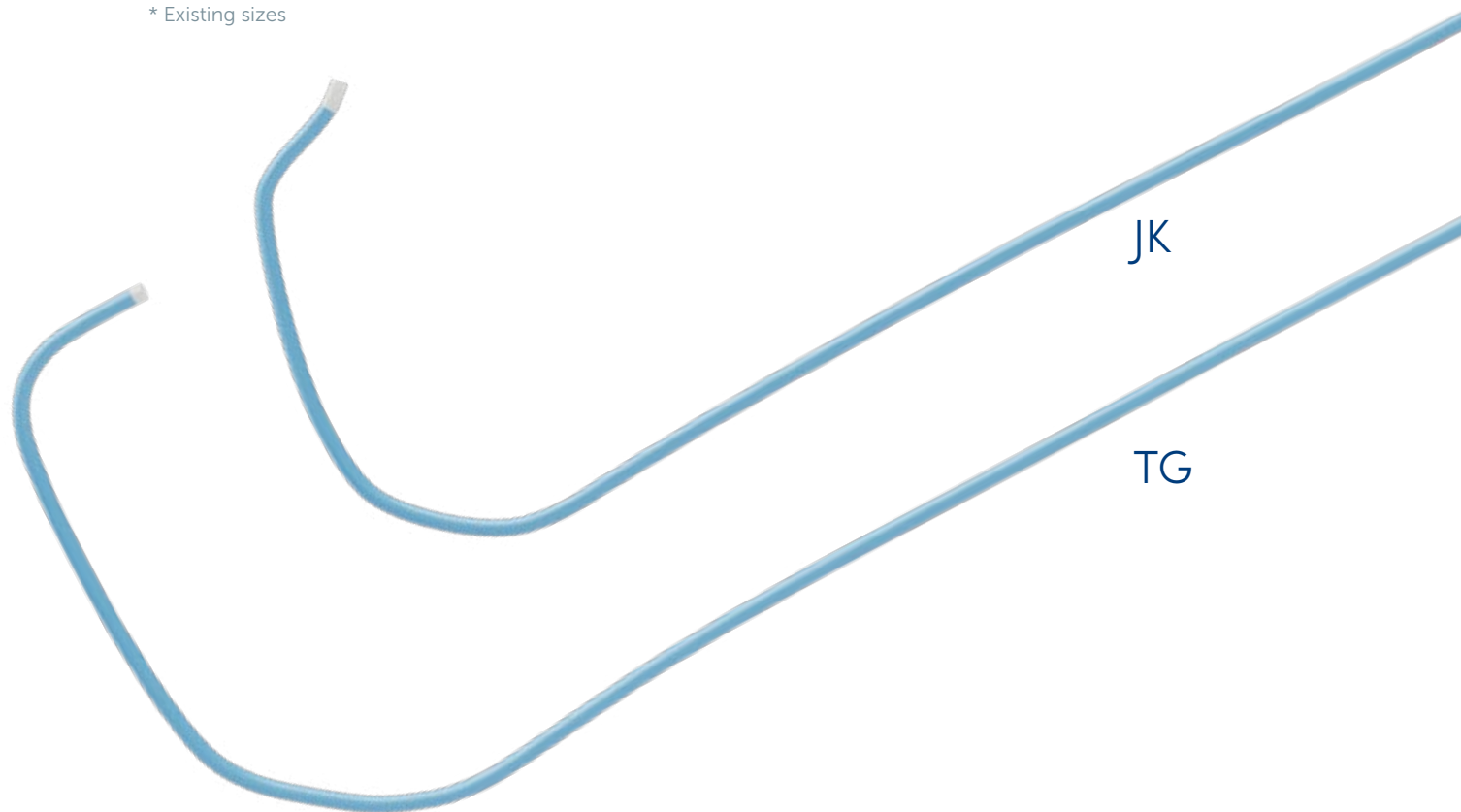
INFINITI[®] AMBI

DIAGNOSTIC CATHETER

Ordering Information

CATHETER TYPE	LENGTH	SIDE HOLES	5F INFINITI	6F INFINITI
JK 3.5	100 cm	2	555500J352	555600J352
	125 cm	2	555525J352	555625J352
JK 4.0*	100 cm	2	555500J402	555600J402
	125 cm	2	555525J402	555625J402
TG 4.0*	100 cm	1	555500T401	555600T401
	125 cm	1	555525T401	555625T401
TG 4.5	100 cm	1	555500T451	555600T451
	125 cm	1	555525T451	555625T451

* Existing sizes



CAUTION: Federal (USA) law restricts the device sale by or on the order of a physician. Important information: Prior to use, refer to the instructions for use supplied with this device for indications, contraindications, suggested procedure, warnings, and precautions. CORDIS, Cordis LOGO, and INFINITI are trademarks of Cordis and may be registered in the US and/or other countries. All other marks are the property of their respective owners.

© 2023 Cordis. All Rights Reserved. 100638909 1/2024

Cordis[®]