

# SELUTION SLR™ DEB DRUG ELUTION DONE BETTER

## SUMMARY OF SUCCESS STUDY TWO-YEAR OUTCOMES

The next step in the evolution of *Leave Nothing Behind* with Sustained Limus Release.

Proven consistency of SELUTION SLR™ DEB across complex patient populations.



## STUDY DESIGN

A multicenter, prospective, observational study evaluating real-world PAD population in routine clinical practice over 24 months. Primary end-point of clinically driven TLR at 12 months.<sup>1</sup>

**723**

PATIENTS

Europe, Asia, and South America

**27**

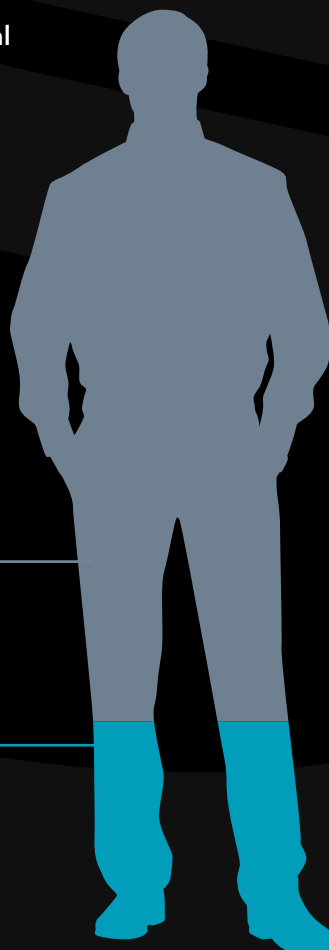
SITES

**74.2%**

CLAUDICANT

**25.8%**

CRITICAL LIMB-THREATENING ISCHEMIA (CLTI)



**12.8cm**

LESION LENGTH

**16.3%**

SEVERE CALCIFICATION

**42.1%**

CTO

**37.9%**

DIABETES

**16.8%**

RENAL FAILURE

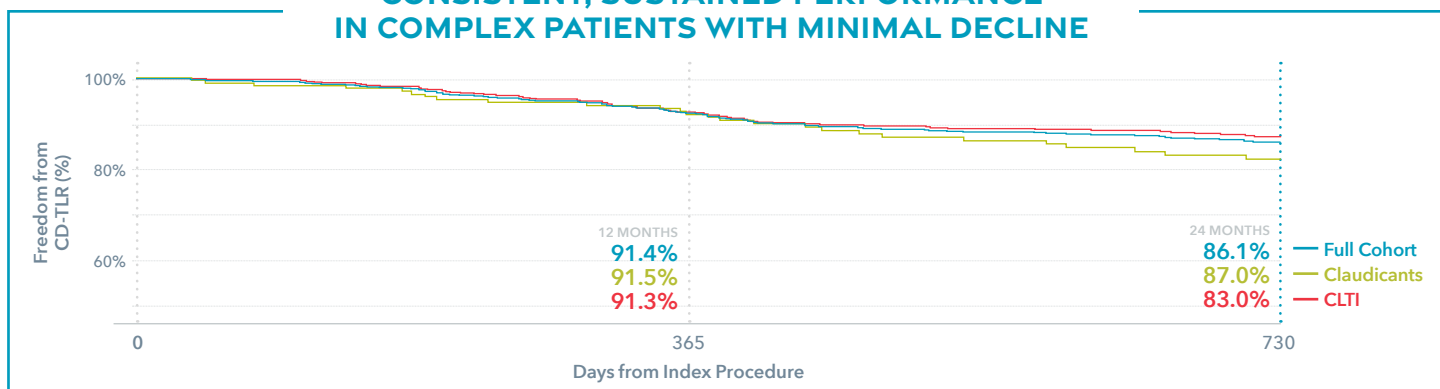
STUDY RESULTS

# UNMATCHED DURABILITY

## IN COMPLEX REAL-WORLD PAD\*

**FREEDOM FROM CD-TLR 86% AT TWO YEARS**

### CONSISTENT, SUSTAINED PERFORMANCE IN COMPLEX PATIENTS WITH MINIMAL DECLINE



### SELUTION SLR DEB OUTCOMES COMPARE FAVORABLY WITH PACLITAXEL DCBs

Despite Treating More Complex Lesions\*

	SUCCESS PTA <sup>1</sup>	IN.PACT Global <sup>2</sup>	Ranger All Comers <sup>3</sup>	Biolux P-III <sup>5</sup>	ILLUMENATE Global <sup>4</sup>
12 Months Freedom from CD-TLR	91.4%	92.8%	89%	92.5%	94.8%
24 Months Freedom from CD-TLR	86.1% ↓ 5.3%	83.5% ↓ 9.3%	-	88.1% ↓ 5.0%	85.3% ↓ 9.5%
Chronic Total Occlusion	42%	35%	-	24%	31%
Severe Calcification	16%	10%	3%	12%	41%
Lesion Length (cm)	12.8	12.1	12.9	8.5	7.5
BTK Involvement	19%	0%	0%	12%	0%

\*Data is based on a cross-trial comparison and not head-to-head clinical trials, the data may not be directly comparable due to differences in study protocols, conditions and patient populations.

### SELUTION SLR™ DEB

## RESULTS WITHOUT COMPROMISE

**2.6%** LOW TARGET LIMB AMPUTATION

**7.8%** MORTALITY RATES IN LINE WITH EXPECTED RATES FOR HIGH-RISK PAD PATIENTS

LEARN MORE:



- 24 Months SUCCESS PTA Study, Oral Presentation, Charing Cross 2026
- Micari, A. et al. JACC: Cardiovasc Interv. 2018
- Lichtenberg, M. J Cardiovasc Surg 2018
- Zeller, T. LINC 2018
- Tepe, G. et al. Cardiovasc Intervent. 2021

For Healthcare Professionals Only. Important information: Prior to use, refer to the instructions for use supplied with this device for indications, contraindications, suggested procedure, warnings and precautions. As part of its continuous product development policy, Cordis reserves the right to change product specifications without prior notification. Please contact your Cordis representative for additional product availability information.

SELUTION SLR Drug-Eluting Balloon, CE 0344, is manufactured by M.A. Med Alliance SA and its affiliates. SELUTION SLR is a trademark of M.A. Med Alliance SA. M.A. Med Alliance SA is a Cordis company. CORDIS and Cordis LOGO are Trademarks of Cordis and may be registered in the US and/or in other countries. All other marks are the property of their respective owners.

©2026 Cordis. All Rights Reserved. 100665136-3

