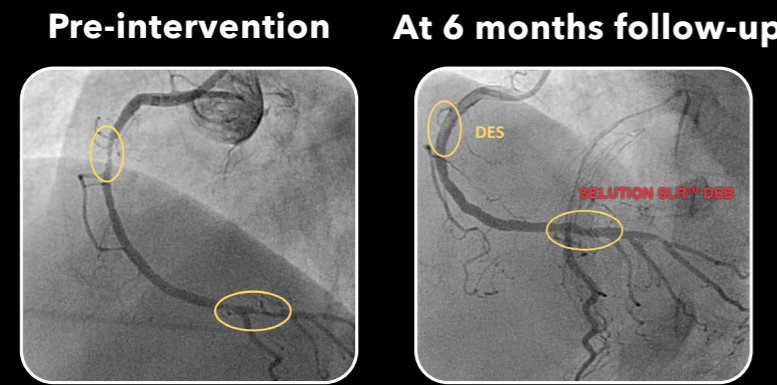


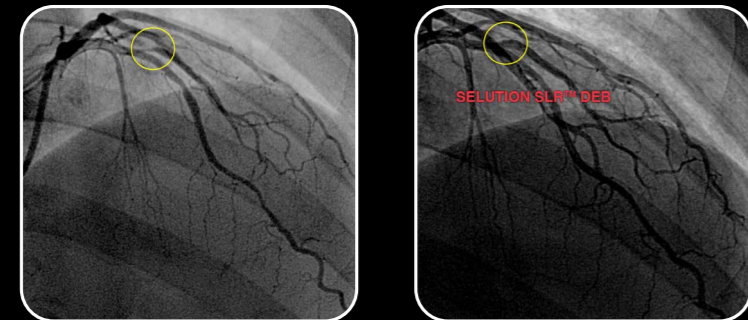
**AN EARLY STUDY WITH SELUTION SLR™ DRUG-ELUTING BALLOON** shows promising angiographic late lumen loss (LLL) and diameter of stenosis (%).<sup>3</sup>

**Case examples from First-in-Human Coronary Study**

**Hybrid Approach (DES & DEB)**



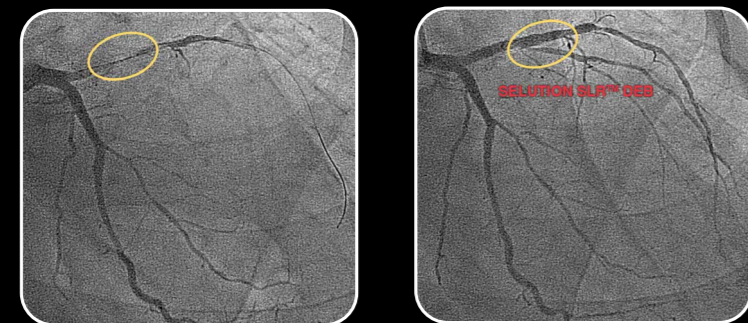
**Bifurcations**



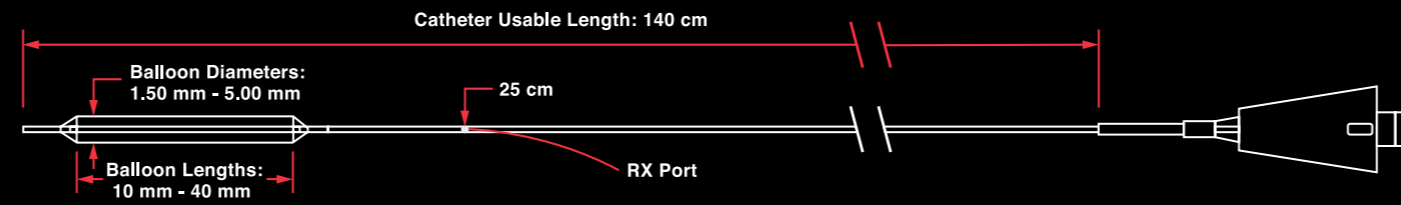
**Small Vessels (<2.75mm)**



**In-Stent Restenosis**



**Technical Specification**



Feature	Specification	Balloon	
Sirolimus Drug Dose	1.0 µg/mm <sup>2</sup>	Nominal Balloon Pressure (NP)	6 bar
Drug Carrier	Cell Adherent Technology (CAT) <sup>™</sup> Amphipathic Lipid Carrier	Rated Burst Pressure (RBP)	12 bar
Catheter Design	Rapid Exchange (RX)	Balloon Diameters	1.50 mm - 5.00 mm
Catheter Usable Length	140 cm	Balloon Lengths	10, 15, 20, 25, 30, 35, 40 mm
Guidewire Compatibility	0.014"		
Tip Entry Profile	0.016"		
Minimum Guide Catheter Compatibility (Fr)	1.50 - 3.75 mm balloon diameter: ≥ 5 Fr 4.00 - 5.00 mm balloon diameter: ≥ 6 Fr		

**Ordering Information**  
**SELUTION SLR™ Sirolimus Drug-Eluting Balloon**

Balloon Diameter (mm)	Balloon Length (mm)						
	10	15	20	25	30	35	40
1.50	SC14-150010	SC14-150015	SC14-150020	SC14-150025	SC14-150030	SC14-150035	SC14-150040
2.00	SC14-200010	SC14-200015	SC14-200020	SC14-200025	SC14-200030	SC14-200035	SC14-200040
2.25	SC14-225010	SC14-225015	SC14-225020	SC14-225025	SC14-225030	SC14-225035	SC14-225040
2.50	SC14-250010	SC14-250015	SC14-250020	SC14-250025	SC14-250030	SC14-250035	SC14-250040
2.75	SC14-275010	SC14-275015	SC14-275020	SC14-275025	SC14-275030	SC14-275035	SC14-275040
3.00	SC14-300010	SC14-300015	SC14-300020	SC14-300025	SC14-300030	SC14-300035	SC14-300040
3.25	SC14-325010	SC14-325015	SC14-325020	SC14-325025	SC14-325030	SC14-325035	SC14-325040
3.50	SC14-350010	SC14-350015	SC14-350020	SC14-350025	SC14-350030	SC14-350035	SC14-350040
3.75	SC14-375010	SC14-375015	SC14-375020	SC14-375025	SC14-375030	SC14-375035	SC14-375040
4.00	SC14-400010	SC14-400015	SC14-400020	SC14-400025	SC14-400030	SC14-400035	SC14-400040
4.50	SC14-450010	SC14-450015	SC14-450020	SC14-450025	SC14-450030	SC14-450035	SC14-450040
5.00	SC14-500010	SC14-500015	SC14-500020	SC14-500025	SC14-500030	SC14-500035	SC14-500040

1. SELUTION SLR DEB was the first Drug Eluting Balloon (DEB) to be awarded Breakthrough Device designation by the US Food and Drug Administration (FDA).  
 2. MedAlliance 2024 Data on File  
 3. Costa RA, Mandal SC, Hazra PK, Chopda M, Chandra P, Damiani LP, Abizaid A, Hiremath S. Sirolimus-coated balloon with a microsphere-based technology for the treatment of de novo or restenotic coronary lesions. Cardiovasc Revasc Med. 2022 Sep 5;15(5):8389(22)00766-7. doi: 10.1016/j.carrev.2022.08.037. Epub ahead of print. PMID: 36192319.

For Healthcare Professionals Only.  
 Important information: Prior to use, refer to the instructions for use supplied with this device for indications, contraindications, suggested procedure, warnings and precautions. As part of its continuous product development policy, Cordis reserves the right to change product specifications without prior notification. Please contact your Cordis representative for additional product availability information.  
 SELUTION SLR Drug-Eluting Balloon, CE 0344, is manufactured by M.A. Med Alliance SA and its affiliates.  
 SELUTION SLR is a trademark of M.A. Med Alliance SA. M.A. Med Alliance SA is a Cordis company.  
 CORDIS and Cordis LOGO are trademarks of Cordis and may be registered in the US and/or in other countries. All other marks are the property of their respective owners.  
 © 2024 Cordis. All Rights Reserved. 100640237 05/2024



**GO BEYOND METAL**



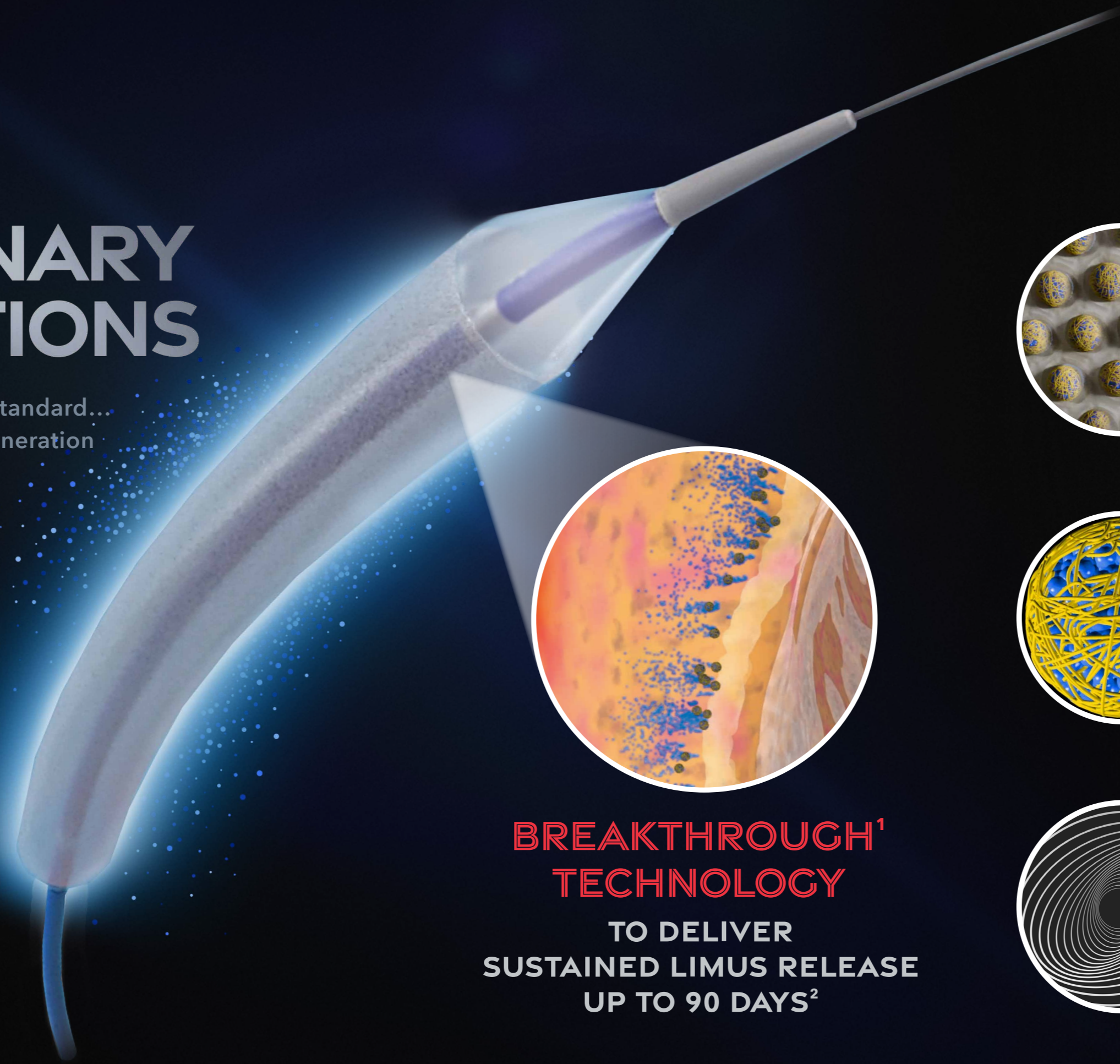
**SELUTION SLR™**  
DRUG-ELUTING BALLOON





# THE NEW PARADIGM FOR CORONARY INTERVENTIONS

Don't compromise on your treatment standard...  
**SELUTION SLR™ DEB** is the latest generation  
of Drug-Eluting Balloon technology.



**BREAKTHROUGH<sup>1</sup>  
TECHNOLOGY**  
TO DELIVER  
SUSTAINED LIMUS RELEASE  
UP TO 90 DAYS<sup>2</sup>

## SELUTION SLR™ DRUG-ELUTING BALLOON A CLASS OF ITS OWN!

### CELL ADHERENT TECHNOLOGY (CAT)™

CELL ADHERENT TECHNOLOGY (CAT)™ facilitates drug uptake and retention, in the tissue, with a minimal drug loss during the procedure while providing excellent deliverability

- Mix of phospholipids containing and protecting MicroReservoirs
- 1 µg/mm<sup>2</sup> Sirolimus drug dose

### MICRORESERVOIRS

MicroReservoirs achieve a consistent and predictable drug release, at a therapeutic level, equivalent to the latest generation Drug-Eluting Stent Technology

- Millions of homogenous 4 µm particles acting as drug delivery systems
- MicroReservoirs are a mix of 4 µm Sirolimus particles and a biodegradable polymer (PLGA)

### BROAD SIZE MATRIX

SELUTION SLR™ DEB offers a broader portfolio to extend treatment options for coronary artery disease

- Diameters from 1.50 to 5.00 mm
- Lengths from 10 to 40 mm