

# DRUG ELUTION DONE BETTER



**SELUCTION SLR™**  
DRUG-ELUTING BALLOON



# SELUTION SLR DEB UNIQUELY DELIVERS SIROLIMUS

The preferred drug for PCI,  
with proven efficacy and safety



## MICRORESERVOIRS

---

- ~4  $\mu\text{m}$  spheres of sirolimus mixed with biodegradable polymer
- Controlled release of sirolimus



## PHOSPHOLIPID BLEND COATING

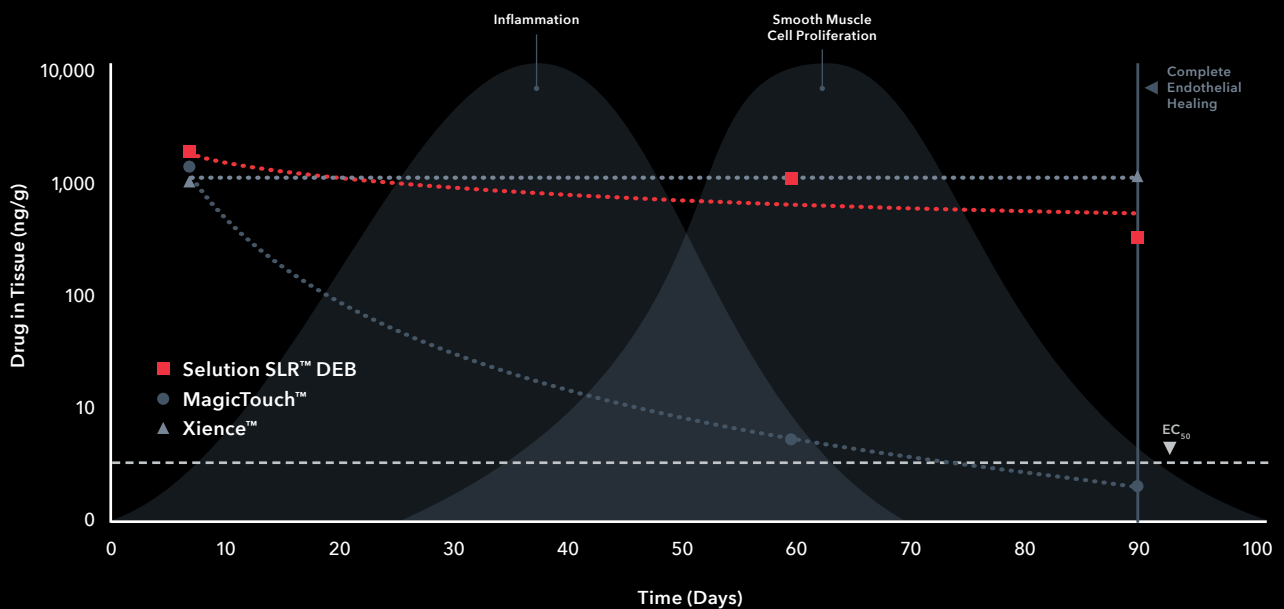
---

- Phospholipid blend containing and protecting microreservoirs at 1  $\mu\text{g}/\text{mm}^2$  sirolimus dose
- Enhanced drug transfer efficiency

# DESIGNED FOR IMPROVED DELIVERY AND SUSTAINED RELEASE OF SIROLIMUS

SELUTION SLR DEB has demonstrated sustained release of sirolimus through 90 days with a similar pharmacokinetic profile comparable to DES<sup>1</sup>

Total Vessel Limus Compounds Recovered, Interim Analysis—Normalized per Vessel



Sirolimus, delivered by SELUTION SLR DEB, as compared to paclitaxel<sup>2</sup>

Sirolimus	Paclitaxel
Cytostatic	Cytotoxic
mTOR inhibition with reversible modulation of cell-cycle activity and natural vessel function	Causes irreversible cell-cycle arrest and cell death, which may impact vessel health (aneurysm and vessel wall thinning) and physiological healing processes, potentially leading to thrombosis
Demonstrated anti-inflammatory properties	No intrinsic anti-inflammatory effect
Reduced distal embolization with sirolimus	Potential risk of downstream embolization

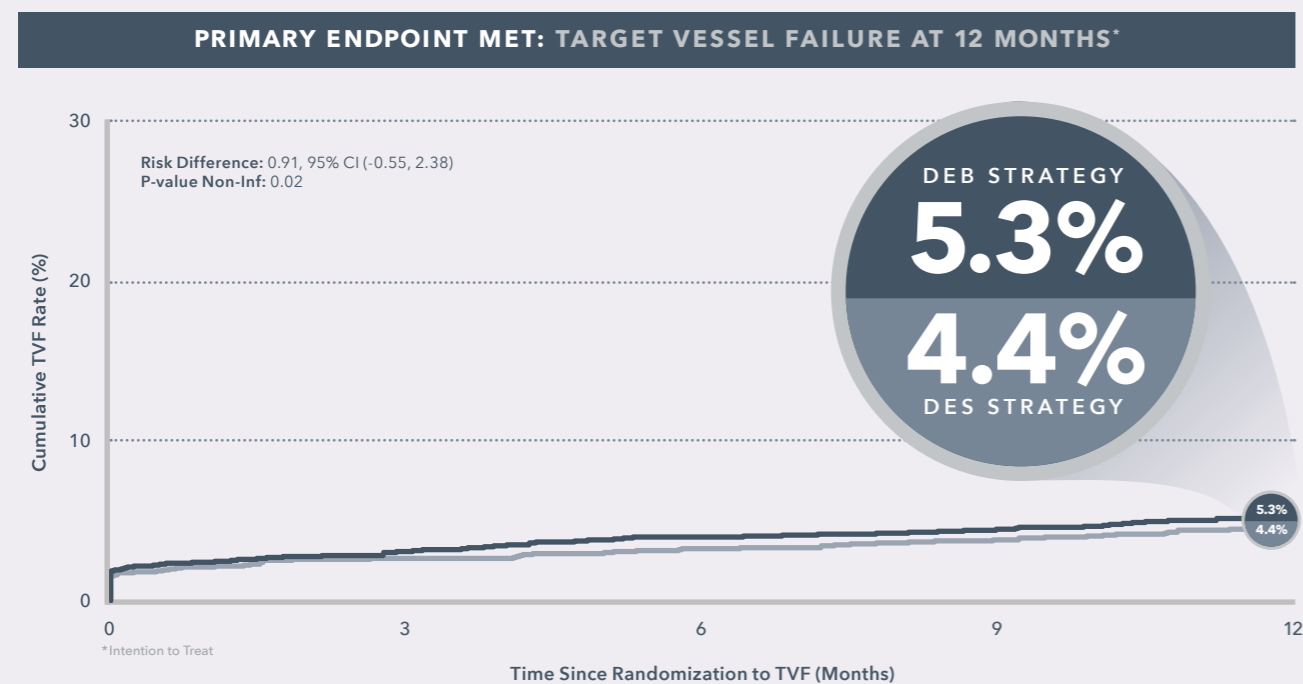
# THE ONLY DEB WITH PROVEN EFFICACY

AGAINST THE CURRENT STANDARD OF CARE IN BOTH REAL-WORLD DENOVO AND ISR CLINICAL TRIALS

## SELUTION **DENOVO**

PTCA STUDY<sup>3</sup>

**SELUTION SLR DEB ACHIEVES DES-LIKE OUTCOMES WITHOUT RISKS OF PERMANENT METAL**



**8 OUT OF 10 PATIENTS STENT FREE**



**3323**

Randomized Patients

**LARGEST CORONARY RCT**

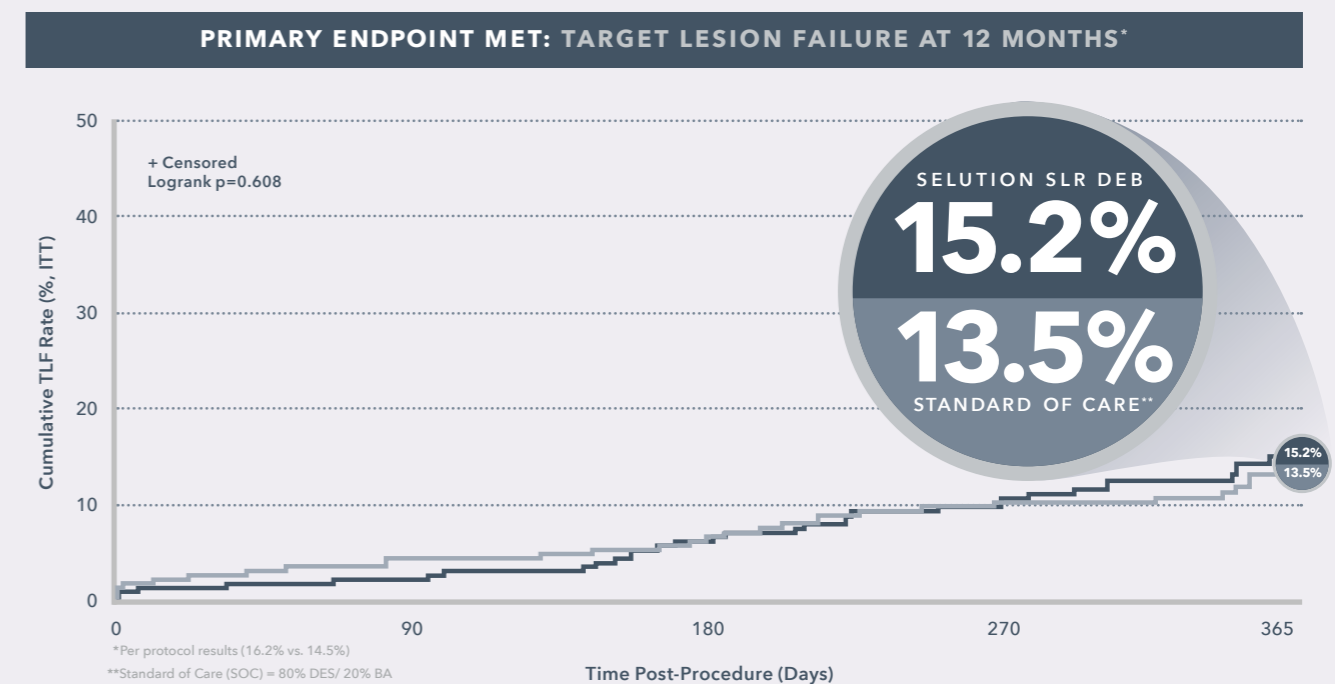
**DEB STRATEGY AS SAFE AS DES STRATEGY**

All Cause Death **1.8% vs. 2.1%**  
Any MI **3.2% vs. 3.2%**  
Late Lesion Thrombosis **0.1% vs. 0.3%**  
BARC3-5 Bleeding **1.2% vs. 1.3%**

## SELUTION**4ISR**

FDA IDE STUDY<sup>4</sup>

**SELUTION SLR DEB IS AN EFFECTIVE ALTERNATIVE TO STANDARD OF CARE IN ISR, MINIMIZING METAL**



**80% DES-TREATED IN SOC ARM**



**418**

Randomized Patients

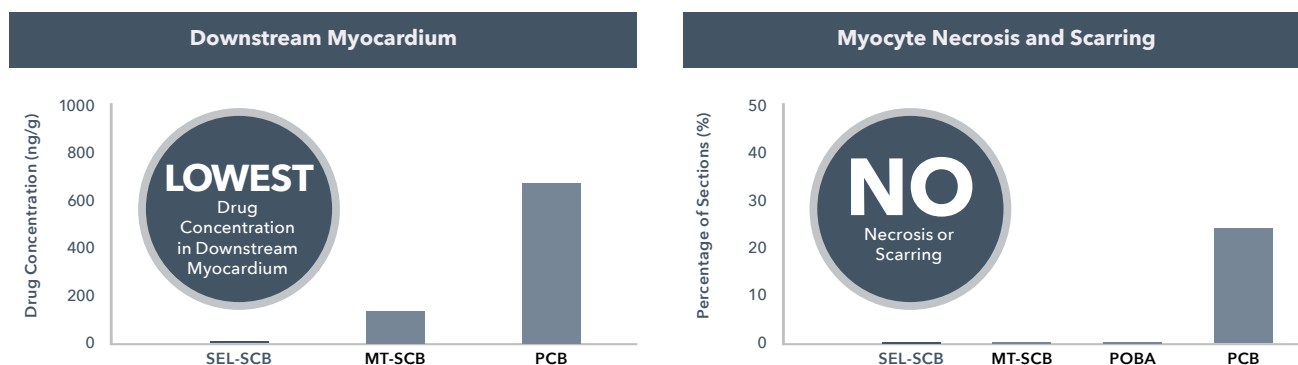
**US, CANADA, BRAZIL, EUROPE**

**SELUTION SLR DEB IS A SAFE ALTERNATIVE TO SOC**

Cardiac Death **2% vs. 1%**  
TMVI **7% vs. 5%**  
CDTLR **12% vs. 12%**  
Stent Thrombosis **2% vs. 2%**  
BARC2-5 Bleeding **8% vs. 10%**

# SELUTION SLR DEB SHOWS REDUCED EMBOLIZATION WITH NO DISTAL TISSUE SCARRING COMPARED TO PACLITAXEL DCB<sup>5</sup>

Vascular response of the coronary artery and the embolization after treatment in a porcine model at 28 days



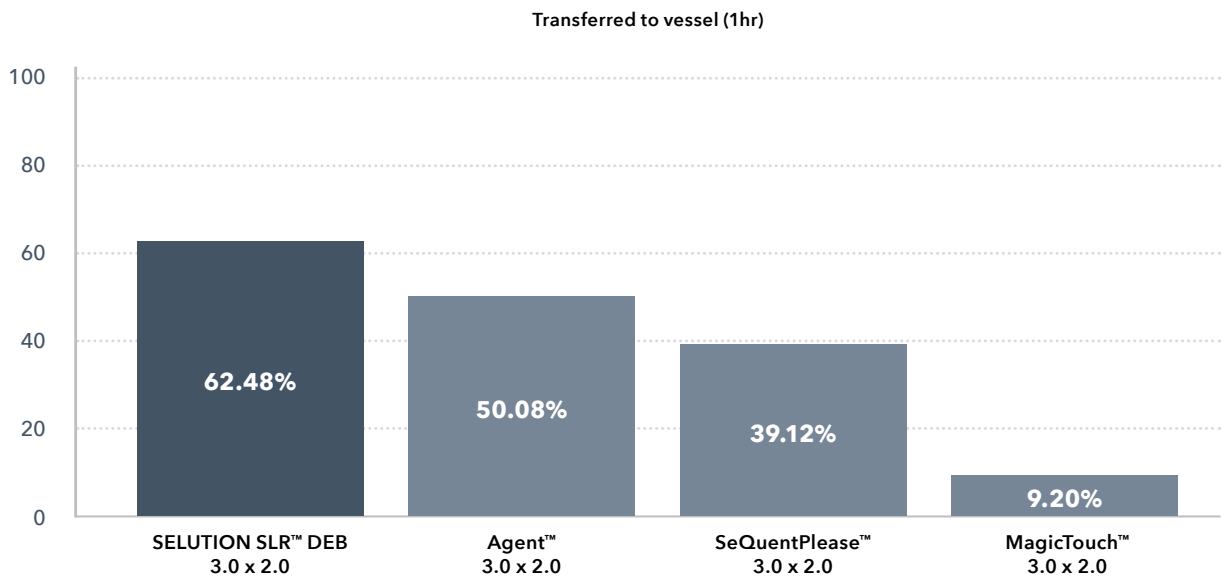
SEL-SCB = SELUTION SLR™ DEB, MT-SCB = MagicTouch™, PCB = Paclitaxel balloon

Compared to paclitaxel crystalline particles, SELUTION SLR DEB provides small, uniform 4 μm micro-reservoirs reducing the risk of embolization<sup>6</sup>

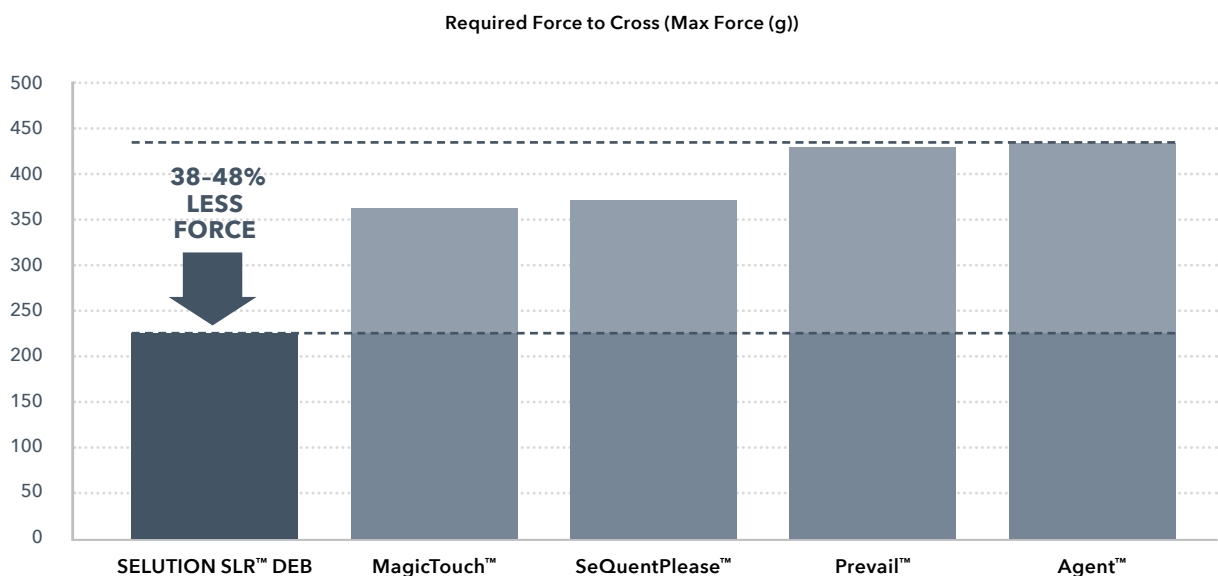


100x Magnification 0.45μ filter used in all tests

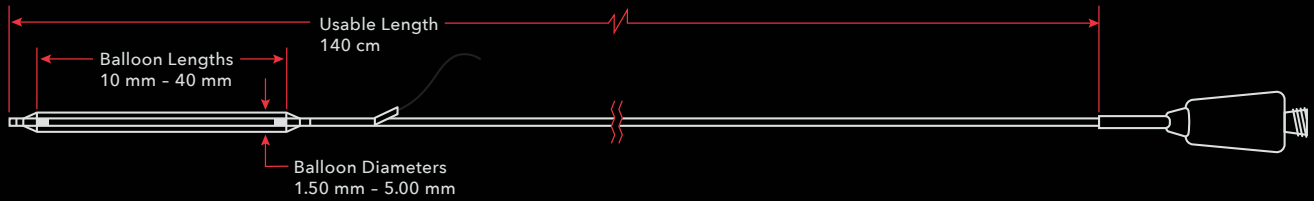
# SELUTION SLR DEB PHOSPHOLIPID BLEND COATING ENABLES HIGHEST DRUG TRANSFER<sup>6</sup>



# SELUTION SLR DEB REQUIRES LESS FORCE TO DELIVER COMPARED WITH LEADING DCB COMPETITORS<sup>6</sup>



## SELUTION SLR™ PTCA DRUG-ELUTING BALLOON



### DEVICE COMPONENT CHARACTERISTICS

<b>Sirolimus Drug Dose</b>	1.0 µg/mm <sup>2</sup>	<b>Tip Entry Profile</b>	0.016"
<b>Drug Carrier</b>	Proprietary Phospholipid Coating/ MicroReservoirs	<b>Minimum Guide Catheter Compatibility (Fr)</b>	1.50-3.75 mm balloon diameter ≤ 5 Fr 4.00-5.00 mm balloon diameter ≥ 6 Fr
<b>Catheter Design</b>	Rapid Exchange (RX)	<b>Balloon Diameters</b>	1.5 mm - 5.0 mm
<b>Catheter Usable Length</b>	140 cm	<b>Balloon Lengths</b>	15, 20, 25, 30, 35, 40 mm
<b>Guidewire Compatibility</b>	0.014"		

### ORDERING INFORMATION

Balloon Diameter (mm)	Balloon Length (mm)					
	15	20	25	30	35	40
1.50	SC14-150015	SC14-150020	SC14-150025	SC14-150030	SC14-150035	SC14-150040
2.00	SC14-200015	SC14-200020	SC14-200025	SC14-200030	SC14-200035	SC14-200040
2.25	SC14-225015	SC14-225020	SC14-225025	SC14-225030	SC14-225035	SC14-225040
2.50	SC14-250015	SC14-250020	SC14-250025	SC14-250030	SC14-250035	SC14-250040
2.75	SC14-275015	SC14-275020	SC14-275025	SC14-275030	SC14-275035	SC14-275040
3.00	SC14-300015	SC14-300020	SC14-300025	SC14-300030	SC14-300035	SC14-300040
3.25	SC14-325015	SC14-325020	SC14-325025	SC14-325030	SC14-325035	SC14-325040
3.50	SC14-350015	SC14-350020	SC14-350025	SC14-350030	SC14-350035	SC14-350040
3.75	SC14-375015	SC14-375020	SC14-375025	SC14-375030	SC14-375035	SC14-375040
4.00	SC14-400015	SC14-400020	SC14-400025	SC14-400030	SC14-400035	SC14-400040
4.50	SC14-450015	SC14-450020	SC14-450025	SC14-450030	SC14-450035	SC14-450040
5.00	SC14-500015	SC14-500020	SC14-500025	SC14-500030	SC14-500035	SC14-500040



1. Tanaka et al, Cardiovasc Revasc Med 2025; S1553-8389(25)00464-6
2. Wessely R, Blaich B, Belaiba RS, Merl S, Görlach A, Kastrati A, Schömig A. Comparative characterization of cellular and molecular anti-restenotic profiles of paclitaxel and sirolimus. Implications for local drug delivery. Thromb Haemost. 2007 Jun;97(6):1003-12. PMID: 17549304.
3. SELUTION DeNovo, Oral Presentation, TCT2025
4. SELUTION4ISR, Oral Presentation, TCT2025 (Investigational Devices for FDA IDE Study)
5. Kawai K et al. Vascular Response, Downstream Effect, and Pharmacokinetics After Sirolimus- and Paclitaxel-Coated Balloons in Porcine Coronary Arteries. Catheter Cardiovasc Interv. 2025 Mar 6. doi: 10.1002/ccd.31482. Epub ahead of print. PMID: 40051028.
6. Cordis 2026 Data on file.



For Healthcare Professionals Only.

Important information: Prior to use, refer to the instructions for use supplied with this device for indications, contraindications, suggested procedure, warnings and precautions. As part of its continuous product development policy, Cordis reserves the right to change product specifications without prior notification. Please contact your Cordis representative for additional product availability information. SELUTION SLR Drug-Eluting Balloon is manufactured by MedAlliance, LLC and its affiliates. SELUTION SLR is a trademark of M.A. Med Alliance SA. MedAlliance, LLC and M.A. Med Alliance SA are Cordis companies. CORDIS and Cordis LOGO are Trademarks of Cordis and may be registered in the US and/or in other countries. All other marks are the property of their respective owners. NCT04280029 (SELUTION4ISR), NCT04859985 (SELUTION DeNovo)

©2026 Cordis. All Rights Reserved. 100640237-2

