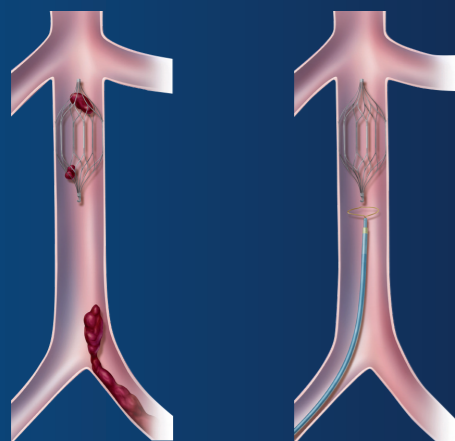


OPTEASE™ Filter Deployment

1. **SELECT** the venous access site for filter insertion.
2. **SELECT** the corresponding OPTEASE™ Filter Kit (femoral vs. jugular vs. jugular/antecubital).
3. **ACCESS** the venous system and perform venogram.
4. **POSITION** the sheath such that the filter will be deployed in the infrarenal inferior vena cava.
5. **LOAD** the storage tube into the sheath valve.
6. **ADVANCE** the filter into the sheath using the obturator until the black line is at the level of the sheath valve.
7. **DEPLOY** the filter by keeping the obturator fixed and retracting the sheath.

OPTEASE™ Filter Retrieval

1. **ACCESS** the FEMORAL VEIN with the 10F OPTEASE™ Filter Retrieval Catheter or equivalent.
2. **SNARE** the retrieval hook of the OPTEASE™ Filter with any snare type.
3. **RETRIEVE** the OPTEASE™ Filter by fully withdrawing the filter into the catheter.
4. **REMOVE** the catheter and OPTEASE™ Filter as one unit.



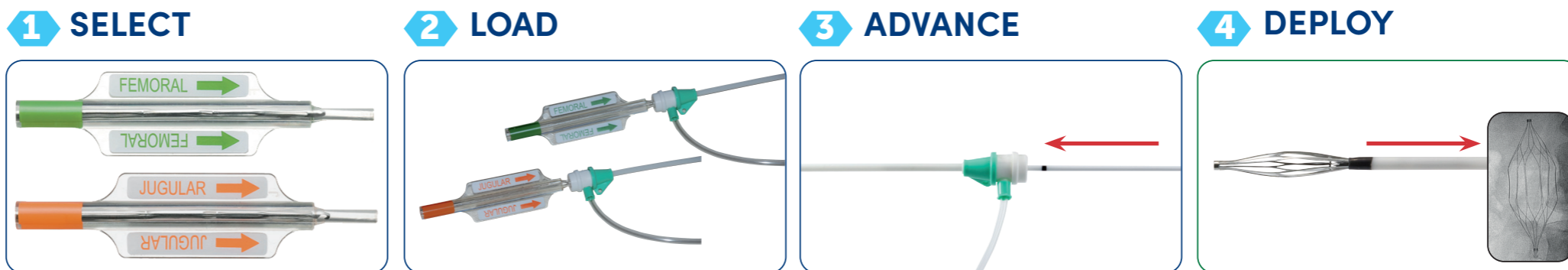
**RETRIEVAL
FEMORAL ONLY**

WARNING: Implant of the OPTEASE™ Vena Cava Filter with the hook oriented in the cranial direction can result in life threatening or serious injury including, but not limited to dissection, vessel perforation, migration of the filter with secondary damage to cardiac structures ineffective pulmonary embolism prevention or death.

Vena Cava Filter Procedural Guide

OPTEASE™ Deployment

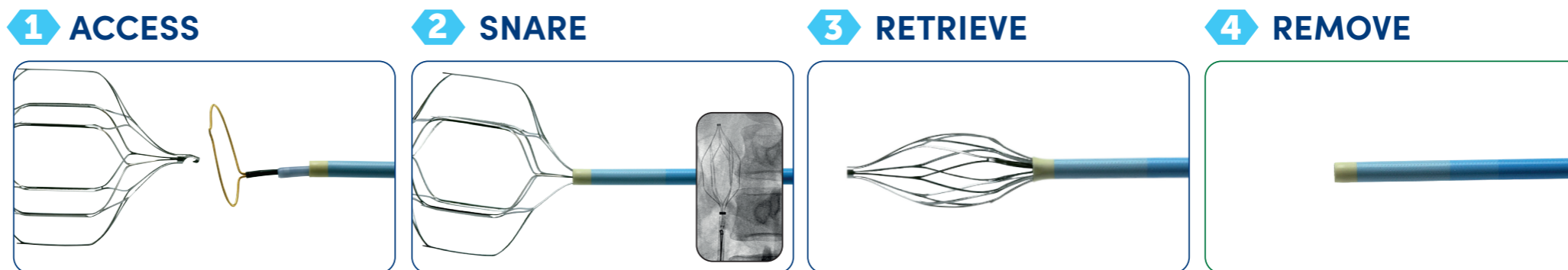
RETRIEVABLE VENA CAVA FILTER



Retrieval of the OPTEASE™ Filter is possible only from femoral vein approach. Do not implant the filter with the intention to retrieve using the jugular access.

OPTEASE™ Retrieval*

RETRIEVABLE VENA CAVA FILTER



The OPTEASE™ Retrievable Filter must be retrieved within 12 days after placement as per IFU.

For healthcare professionals only. Important information: Prior to use, refer to the instructions for use supplied with this device for indications, contraindications, side effects, suggested procedure, warnings and precautions. As part of its continuous product development policy, Cordis reserves the right to change product specifications without prior notification. Please contact your Cordis representative for additional product availability information. CORDIS, Cordis LOGO and OPTEASE are trademarks of Cordis and may be registered in the US and/or in other countries. © 2023 Cordis. All Rights Reserved. 100535066-3 01/2023