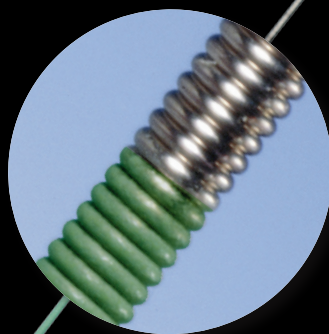


STEERABILITY AND TORQUE, EXPERIENCE THE CONTROL



STORQ™
0.035" STEERABLE GUIDEWIRE



The STORQ™ Guidewire brings you a softer tip and sturdy support

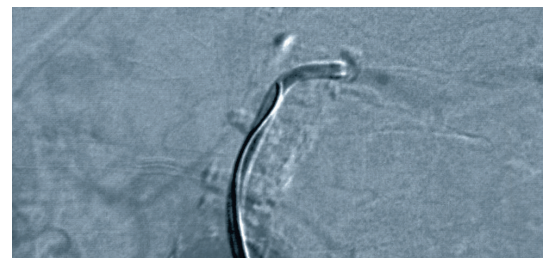
STEERABILITY AND TORQUE, EXPERIENCE THE CONTROL

- STORQ™ Guidewire's atraumatic tip segment is soft and flexible to guard against intimal damage or plaque disruption during device delivery and catheter exchange.
- Length of core taper provides three different distal flexibilities soft, supersoft, and standard for atraumatic navigation through various peripheral vessels.



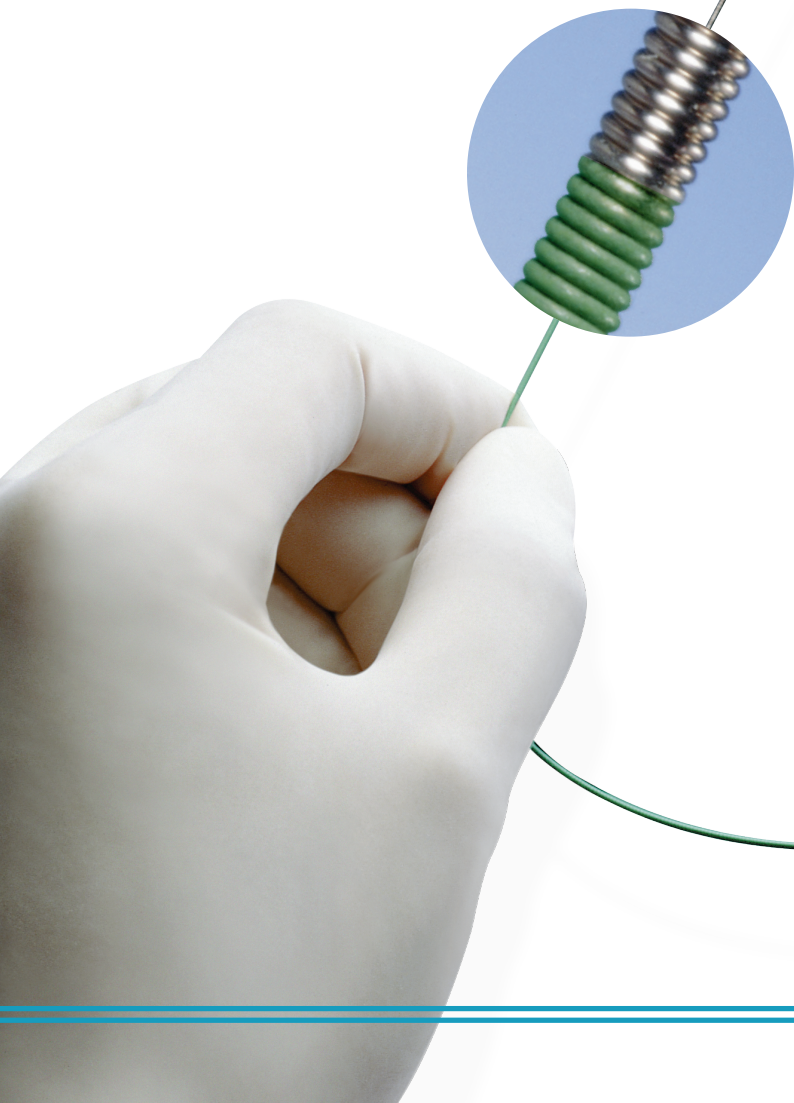
A BROAD RANGE OF WIRES - WITH STRAIGHT, ANGLED AND MODIFIED J CONFIGURATIONS

- Preshaped angled, modified J, and straight tip shapes provide



EXCELLENT TIP AND BODY VISUALIZATION

- Radiopaque distal tip and radiolucent shaft permit clear fluoroscopic visualisation that allows precise placement.



PTFE AND SLX™ COATINGS FOR SUPERB LUBRICITY

- Designed with durable PTFE and SLX™ Coatings.
 - PTFE Coating ends 10 cm from distal tip, while SLX™ Coating continues to tip to facilitate crossing tight or tortuous lesions.
- PTFE and SLX™ Coatings create a lubricious surface for improved catheter tracking and guidewire movement.
 - Proximal segment is uncoated for secure attachment of torque device.

PTFE and SLX™
Guidewire Coatings

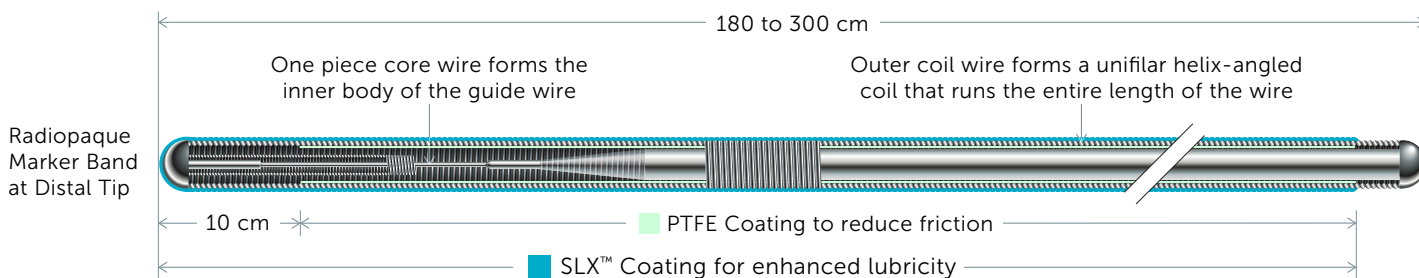
TORQUE DEVICE
PACKAGED WITH EVERY
STORQ™ STEERABLE
GUIDEWIRE

Torque Device

EXCELLENT SUPPORT

- STORQ™ Guidewire provides enhanced shaft support and stability for stent and balloon catheter delivery.
- STORQ™ Guidewire maintains excellent torqueability and steerability for controlled access to target lesions.
- Design features:
 - Rigid, one-piece, stainless steel core for excellent torque response to help prevent whipping.
 - Single outer coil that runs entire length of wire for more flexibility.





DIFFERENT TAPER LENGTHS FOR PROCEDURAL FLEXIBILITY

If you want...	Then select...	Taper length
Firm support	Standard	10 cm
Multifunctional capability	Soft	13 cm
Maximum flexibility	SuperSoft	25 cm

ORDERING INFORMATION

Diameter (inch)	Tip Flexibility	Tip Shape	Length (cm)	Catalog Number	Quantity
.035	SuperSoft	Straight	180	503-256	5 Units/Box*
.035	SuperSoft	Angled	180	503-256J	5 Units/Box*
.035	Soft	Straight	180	503-356	5 Units/Box*
.035	Soft	Angled	180	503-356J	5 Units/Box*
.035	Soft	Modified J	180	503-356MJ	5 Units/Box*
.035	Soft	Straight	300	503-356X	5 Units/Box*
.035	Soft	Angled	300	503-356Y	5 Units/Box*
.035	Soft	Modified J	300	503-356MY	5 Units/Box*
.035	Standard	Straight	180	503-456	5 Units/Box*
.035	Standard	Angled	180	503-456J	5 Units/Box*
.035	Standard	Modified J	180	503-456MJ	5 Units/Box*
.035	Standard	Straight	300	503-456X	5 Units/Box*
.035	Standard	Angled	300	503-456Y	5 Units/Box*

*Each catalog number must be ordered by the box

For Healthcare Professionals Only.

Important information: Prior to use, refer to the instructions for use supplied with this device for indications, contraindications, suggested procedure, warnings and precautions. As part of its continuous product development policy, Cordis reserves the right to change product specifications without prior notification.

Please contact your Cordis representative for additional product availability information.

CORDIS, Cordis LOGO, SLX and STORQ are trademarks of Cordis and may be registered in the US and/or in other countries.

© 2025 Cordis. All Rights Reserved. 100598955-2 03/2025

