

Cordis **EXOSEAL**®

Vascular Closure Device

CORDIS EXOSEAL® VCD



Maximise Clinical Safety*.

An approach to secure
and easy closure

* Clinical data from the "ECLIPSE Trial" indicates safety in terms of vascular injury, access site-related bleeding, infection or nerve injury, new ipsilateral lower extremity ischemia or SAE.
Wong et al JACC Cardiovasc Interv. 2009 Aug;2(8):785-93.

Cordis®
A Cardinal Health company

Access, Diagnose and Treat with the Complete Line of Products and Services from Cordis

Since 1959, Cordis has been a leader in the market offering best-in-class access, diagnostic and treatment solutions. Over the past five decades, our product offering has grown to become one of the largest in the industry. With high performing solutions to help support sustained patient outcomes, Cordis has become the full-line partner of choice.

Why EXOSEAL®?

The Novel Choice.

Introducing the Cordis EXOSEAL®
Vascular Closure Device.

Combining clinical *safety**
and *ease-of-use*, the Cordis
**EXOSEAL® Vascular Closure
Device** means a more confident
close and improved patient
outcomes.

- Easy-to-Use Functionality
- Trusted Bioabsorbable Technology
- Precise Extravascular Closure
- Excellent Clinical Results*

*Clinical data from the "ECLIPSE Trial" indicates safety in terms of vascular injury, access site-related bleeding, infection or nerve injury, new ipsilateral lower extremity ischemia or SAE.
Wong et al JACC Cardiovasc Interv. 2009 Aug;2(8):785-93.

Product Features



Deployment Button

Lockout feature reduces risk of intravascular plug deployment.



Indicator Window

Provides indication of extravascular position before deployment.



Sheath Adapter & Wire Loop Release

- Compatible with introducer sheath (sheath exchange not required):**
 - Minimises chance of infection and inflammation → Maximises patient comfort.

Cordis **EXOSEAL**® Closure Device provides

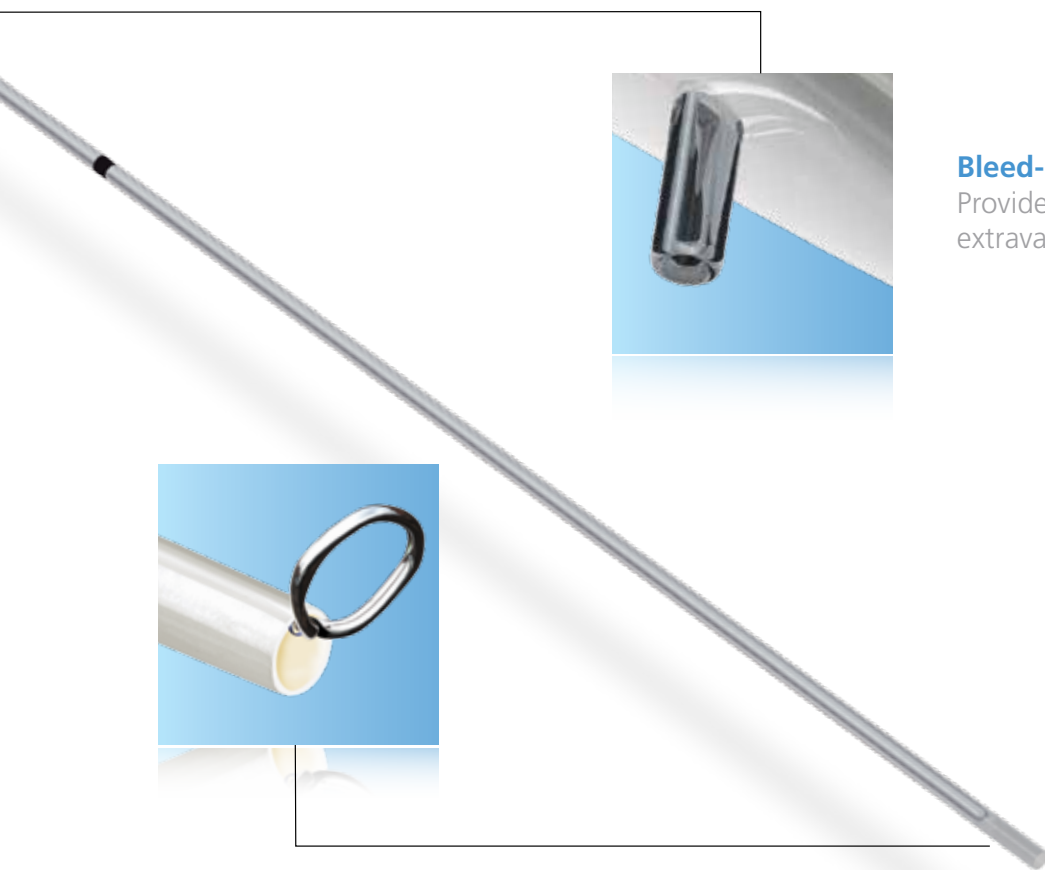
**Compatible with sheaths up to 12 cm. Please consult IFU for further details.

Cordis **EXOSEAL**®

Vascular Closure Device

Maximise Clinical Safety* in Closure

Designed for accurate placement, secure extravascular deployment and reduced complication rates.*



Bleed-Back System

Provides visual indicator for secure extravascular plug deployment.

PRODUCT FEATURES

Indicator Wire

Nitinol indicator wire provides gentle and precise feedback to ensure extravascular plug placement.

precise and secure extravascular arterial closure.

*Clinical data from the "ECLIPSE Trial" indicates safety in terms of vascular injury, access site-related bleeding, infection or nerve injury, new ipsilateral lower extremity ischemia or SAE.
Wong et al JACC Cardiovasc Interv. 2009 Aug;2(8):785-93.



Bioabsorbable Technology

Clinically **Safe*** and

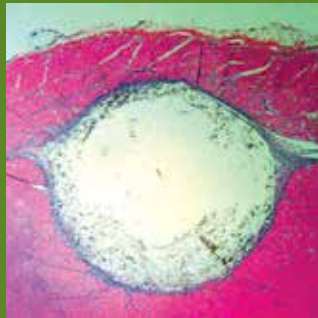
Trusted, Synthetic Plug Closure

The Cordis EXOSEAL® Vascular Closure Device uses a Polyglycolic Acid (PGA) plug material to securely close the femoral artery puncture site while causing low tissue reactivity to minimise access site complications.*

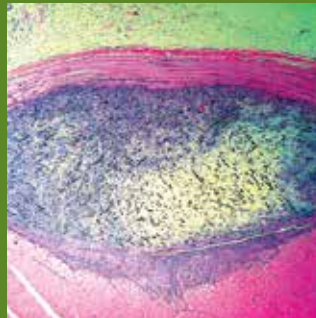
*Clinical data from the "ECLIPSE Trial" indicates safety in terms of vascular injury, access site-related bleeding, infection or nerve injury, new ipsilateral lower extremity ischemia or SAE.
Wong et al JACC Cardiovasc Interv. 2009 Aug;2(8):785-93.

Plug Absorption Characteristics

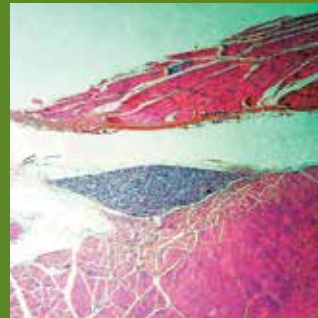
PGA plug material absorption and tissue reaction assessment in rat gluteal model¹



3 Days



14 Days



60 Days

Effective

Why a PGA Plug is Safe*:

- PGA has a long history in medical use
- PGA is not made from animal tissue
- Fully resorbed within 60-90 days

¹ Data on file at Cordis

*Clinical data from the "ECLIPSE Trial" indicates safety in terms of vascular injury, access site-related bleeding, infection or nerve injury, new ipsilateral lower extremity ischemia or SAE.
Wong et al JACC Cardiovasc Interv. 2009 Aug;2(8):785-93.

Extravascular Positioning

Secure Extravascular Closure

- Confident, extravascular positioning of bioabsorbable plug
- Plug is held securely in place by surrounding tissue



Secure and Precise Extravascular Placement

- Eliminates any possibility of intravascular deployment
- Deploys haemostatic plug without impeding arterial blood flow
- Provides two visual signals to increase operator confidence and patient comfort



BLACK-WHITE

Device not yet positioned to deploy.
Lockout feature activated.



BLACK-BLACK

Deploy, if significantly reduced
bleed-back is also seen from
bleed-back window.



BLACK-RED

Release slight tension on device
until window shows BLACK-BLACK.
Otherwise switch to manual
compression.



Cordis **EXOSEAL**®

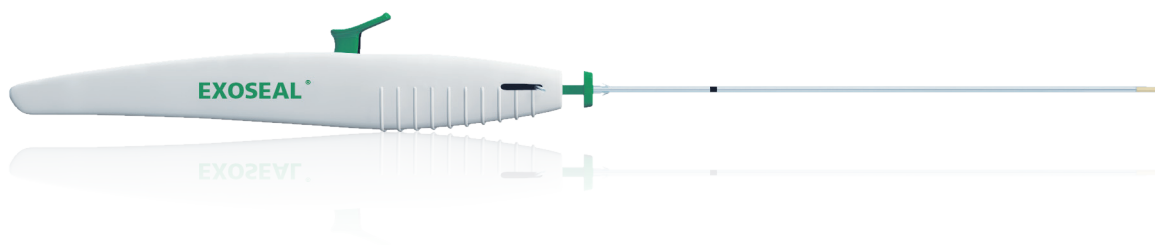
Vascular Closure Device

For clinically safe*, confident close resulting in improved patient outcomes, use the Cordis EXOSEAL® Vascular Closure Device

- **Easy-to-Use Functionality**
- **Trusted Bioabsorbable Technology**
- **Precise Extravascular Closure**
- **Excellent Clinical Results***

*Clinical data from the "ECLIPSE Trial" indicates safety in terms of vascular injury, access site-related bleeding, infection or nerve injury, new ipsilateral lower extremity ischemia or SAE Wong et al JACC Cardiovasc Interv. 2009 Aug;2(8):785-93. E.

CSI's FRENCH SIZE	CATALOGUE NUMBER	DESCRIPTION
5F	EX500CE	EXOSEAL® - to be used with a 5 F sheath introducer up to 12 cm
6F	EX600CE	EXOSEAL® - to be used with a 6 F sheath introducer up to 12 cm
7F	EX700CE	EXOSEAL® - to be used with a 7 F sheath introducer up to 12 cm



Cordis[®]
A Cardinal Health company

IMPORTANT INFORMATION: Prior to use, refer to the "Instructions for Use" supplied with these devices for indications, contraindications, side effects, suggested procedure, warnings, and precautions. As part of the Cordis policy of continuous product development, we reserve the right to change product specifications without prior notification.
For healthcare professionals only.

© 2020 Cardinal Health. All Rights Reserved. CORDIS, the Cordis LOGO, and EXOSEAL are trademarks or registered trademarks of Cardinal Health.
Cardinal Health Australia 503 Pty Ltd, Level 2, 5 Eden Park Drive, North Ryde NSW 2113
Doc Ref # CCR-29