

## RECANALIZATION OF A CHRONIC TOTAL OCCLUSION OF THE LEFT SUPERFICIAL FEMORAL ARTERY WITH A DISTAL AUXILIARY ACCESS

Prof. Dr. Gerd Grözinger  
University Hospital Tübingen, Germany  
2021



### CASE OUTLINE

Eighty year old female with peripheral arterial occlusive disease Rutherford stage 4 of the left lower extremity. Angiography of the left thigh with access from crossover. Evidence of complete chronic occlusion of the superficial femoral artery. Distal refilling of the superficial femoral artery (Fig. 1).

### TREATMENT PROGRESS

Frustrating attempt to cross the CTO from antegrade. In this respect, peripheral puncture with a 21G fine needle was used. After insertion of a 0.018 inch support catheter, retrograde crossing of the occlusion was successful with externalization of the wire via a Cordis TEMPO AQUA™ 4F Vertebral Catheter, which has superior controllability in the area of stenoses (Fig. 2).

### RESULTS:

Technically and clinically successful intervention with, at most, linear non-flow-limiting dissection after use of drug-eluting angioplasty balloons. Hemostasis of the peripheral puncture was achieved by low-pressure balloon angioplasty (Fig. 3).

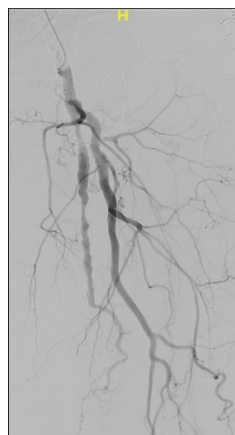


Figure 1

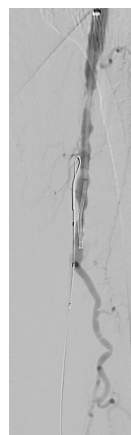
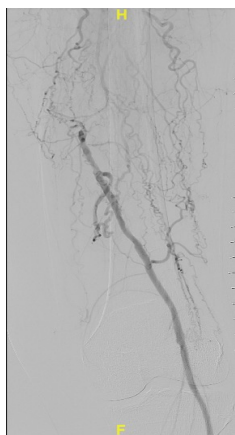


Figure 2

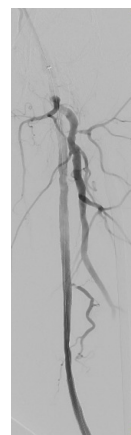
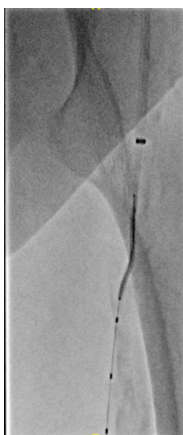


Figure 3

## RECANALIZATION OF A CHRONIC TOTAL OCCLUSION OF THE LEFT SUPERFICIAL FEMORAL ARTERY WITH A DISTAL AUXILIARY ACCESS

Prof. Dr. Gerd Grözinger  
University Hospital Tübingen, Germany  
2021



### CASE OUTLINE

Eighty year old female with peripheral arterial occlusive disease Rutherford stage 4 of the left lower extremity. Angiography of the left thigh with access from crossover. Evidence of complete chronic occlusion of the superficial femoral artery. Distal refilling of the superficial femoral artery (Fig. 1).

### TREATMENT PROGRESS

Frustrating attempt to cross the CTO from antegrade. In this respect, peripheral puncture with a 21G fine needle was used. After insertion of a 0.018 inch support catheter, retrograde crossing of the occlusion was successful with externalization of the wire via a Cordis TEMPO AQUA™ 4F Vertebral Catheter, which has superior controllability in the area of stenoses (Fig. 2).

### RESULTS:

Technically and clinically successful intervention with, at most, linear non-flow-limiting dissection after use of drug-eluting angioplasty balloons. Hemostasis of the peripheral puncture was achieved by low-pressure balloon angioplasty (Fig. 3).

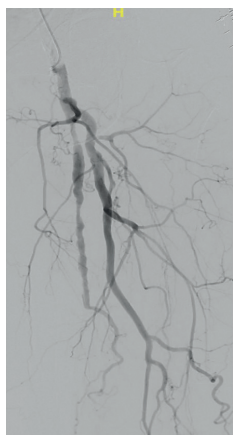


Figure 1

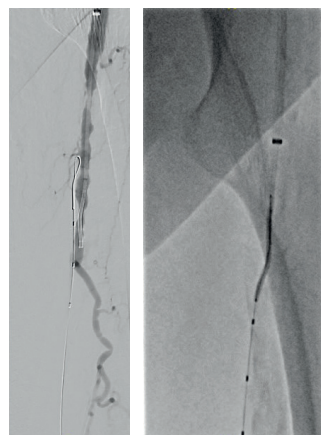
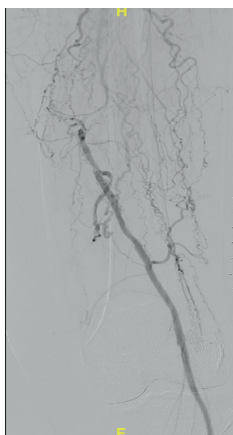


Figure 2

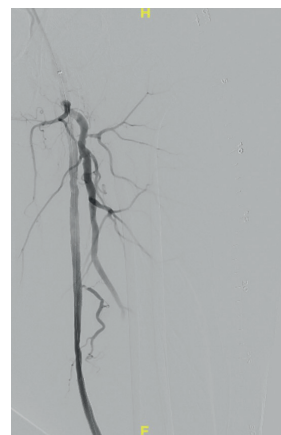


Figure 3