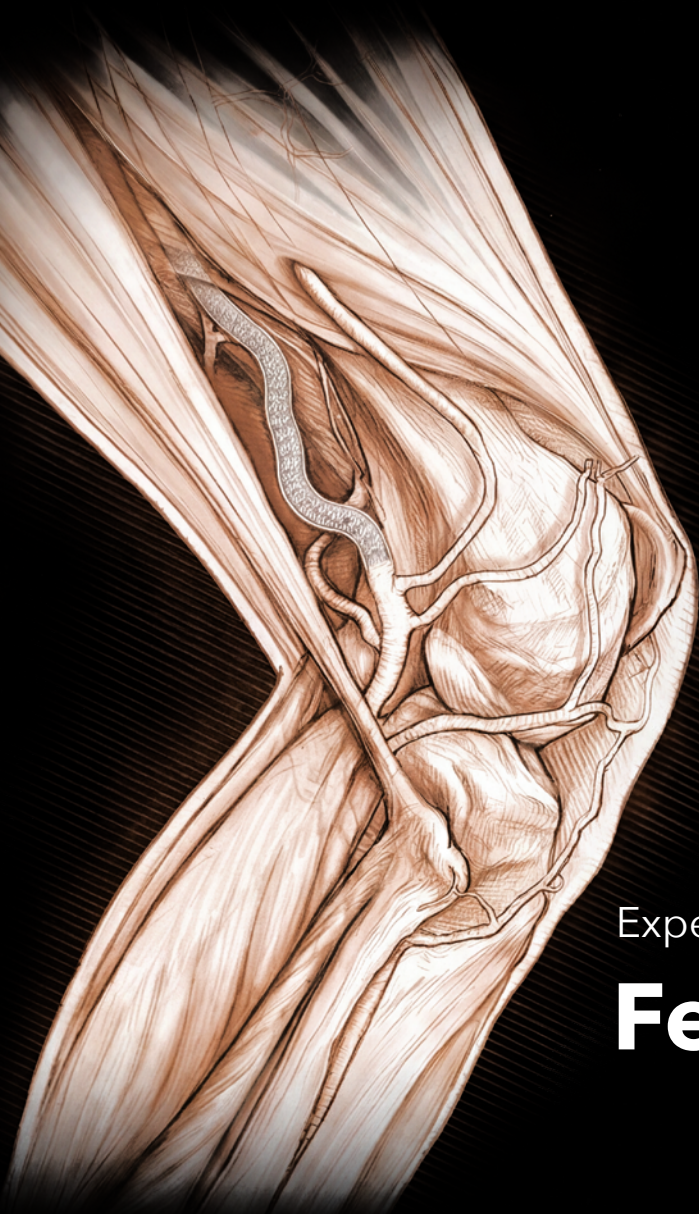


OUR INSPIRATION CAME RIGHT FROM THE SOURCE



Experience our Cordis self-expanding stents.

Feeling is believing

S.M.A.R.T.™ FLEX
VASCULAR STENT SYSTEM



S.M.A.R.T.™ Flex Vascular Stent System Product Description

Type: Fully connected yet flexible stent design

Material: Nitinol, with tantalum markers on stent ends

Maximum Guidewire: 0.035"

Stent Lengths: 30-150 mm

Sheath Compatibility: 6F

Stent Diameters: 5-8 mm

Stent Delivery System Working Lengths: 80 cm (S suffix) and 120 cm (M suffix)

ORDERING INFORMATION

Stent Diameter (mm)	Stent Length (mm)	Recommended Lumen Size (mm)	Recommended Sheath Introducer Size	Catalogue Number Length of delivery system	
				80 cm	120 cm
5	30	3.5-4.5	6	SF05030SV	
5	40	3.5-4.5	6	SF05040SV	SF05040MV
5	60	3.5-4.5	6	SF05060SV	SF05060MV
5	80	3.5-4.5	6	SF05080SV	SF05080MV
5	100	3.5-4.5	6	SF05100SV	SF05100MV
5	120	3.5-4.5	6	SF05120SV	SF05120MV
5	150	3.5-4.5	6	SF05150SV	SF05150MV
6	40	4.5-5.5	6		SF06040MV
6	60	4.5-5.5	6		SF06060MV
6	80	4.5-5.5	6		SF06080MV
6	100	4.5-5.5	6		SF06100MV
6	120	4.5-5.5	6		SF06120MV
6	150	4.5-5.5	6		SF06150MV
7	40	5.5-6.5	6		SF07040MV
7	60	5.5-6.5	6		SF07060MV
7	80	5.5-6.5	6		SF07080MV
7	100	5.5-6.5	6		SF07100MV
7	120	5.5-6.5	6		SF07120MV
7	150	5.5-6.5	6		SF07150MV
8	40	6.5-7.5	6		SF08040MV
8	60	6.5-7.5	6		SF08060MV
8	80	6.5-7.5	6		SF08080MV
8	100	6.5-7.5	6		SF08100MV
8	120	6.5-7.5	6		SF08120MV
8	150	6.5-7.5	6		SF08150MV

For Healthcare Professionals Only.

Prior to use, refer to the instructions for use supplied with this device or available at www.cordislabeling.com for indications, contraindications, suggested procedure, warnings, and precautions. Please contact your Cordis representative for additional product availability information.

CORDIS, Cordis LOGO and S.M.A.R.T. are trademarks of Cordis and may be registered in the US and/or in other countries.

© 2026 Cordis. All Rights Reserved. 100551514-5

